



International Technical Brief for the FIRO-B® ASSESSMENT

Justin Arneson



800-624-1765 | www.cpp.com

CONTENTS

| | |
|--|----|
| Introduction | 1 |
| Brief Recap of the Components of the FIRO-B® Instrument | 1 |
| Samples | 2 |
| Mean Scores Across Languages | 4 |
| Reliability | 30 |
| Summary | 30 |
| References | 31 |

INTRODUCTION

The *Fundamental Interpersonal Relations Orientation–Behavior*[™] (FIRO-B[®]) instrument is a short self-report tool designed to measure behaviors arising from interpersonal needs. The instrument has utility for providing insight in a variety of contexts, including one-on-one relationships, team building, career development, organizational culture development, and leadership development (Waterman & Rogers, 1996). When used properly, it provides individuals and teams with increased insight into, and appreciation of, interpersonal behaviors. This in turn can lead to their increased interpersonal effectiveness and satisfaction when working with or relating to others. For a detailed discussion of the underlying theory and construction of the FIRO-B instrument, see Hammer and Schnell (2000) and Schutz (1958).

Since its inception, the FIRO-B instrument has been translated into a number of languages and administered globally. While a substantial research base has documented the technical properties of the instrument as used in the United States (e.g., Hammer & Schnell, 2000), technical documentation is more limited in international samples, with some exception

for European markets (OPP Ltd, 2010) and the FIRO Business[®] instrument (Herk, Thompson, Morris, & Schaubhut, 2009), which was derived from the original FIRO-B instrument. The purpose of this technical brief is to compile and update the relevant technical material available from international respondents. It builds on the international examinations of recent years by investigating a large amount of commercial and normative data that has accumulated in the intervening years.

BRIEF RECAP OF THE COMPONENTS OF THE FIRO-B[®] INSTRUMENT

As noted above, the goal of the FIRO-B instrument is to help individuals understand their interpersonal needs and behaviors. The instrument itself is derived from a theory of interpersonal needs outlined by Schutz (1958). The three fundamental interpersonal needs described by Schutz are *Inclusion*, *Control*, and *Affection*. Table 1 describes each of these interpersonal needs in more detail.

TABLE 1. DEFINITIONS OF THE THREE INTERPERSONAL NEEDS

Inclusion

The need to establish and maintain satisfactory interactions and associations with other people; describes the extent of contact one desires with others and the degree to which one wants to join others in shared activity.

Control

Describes an individual's behavior with respect to responsibility, power, influence, and decision making; reflects the degree to which one desires to influence or direct the behavior of others or the extent to which a person wants to be perceived as competent, decisive, and in charge.

Affection

Describes an individual's behavior in forming close, personal relationships and determines the degree of warmth and personal connections one seeks with others; applies primarily to one-on-one interaction rather than to group behavior.

Source: Adapted from *FIRO-B[®] Technical Guide* (pp. 3–4), by A. L. Hammer with E. R. Schnell, 2000, with permission of the publisher, CPP, Inc. Copyright 2000 by CPP, Inc. All rights reserved.

A second major component of Schutz's theory refers to the extent to which each of the above interpersonal needs is *expressed* or *wanted*. Expressed needs refer to behaviors demonstrated toward others, while wanted needs are those behaviors that individuals want exhibited toward them (Schutz, 1958). The FIRO-B instrument combines these two major components to yield dimensional scores: Expressed Inclusion, Wanted Inclusion, Expressed Control, Wanted Control, Expressed Affection, and Wanted Affection. Additionally, the instrument calculates total scores for each of the underlying components of the model (i.e., Total Expressed, Total Wanted, Total Inclusion, Total Control, Total Affection, and Total Overall). While these scores are less useful for providing individual insight, they do provide additional indices for comparing populations of individuals.

SAMPLES

All translations of the original 54-item FIRO-B instrument referenced here followed the International Test Commission (ITC, 2000) guidelines. Existing translations were used to collect data from people who read and understood Canadian French or European English. New translations were developed for people who read and understood Simplified Chinese, Traditional Chinese, Danish, Dutch, French, German, Japanese, Brazilian Portuguese, Russian, or Swedish. Two separate Spanish translations were developed, one for Spanish as read and understood by people in Spain and one for Latin American Spanish (the version of Spanish that can be read and understood by Spanish speakers in the Western Hemisphere but not including all regional dialects). Additionally, a customized Spanish translation was developed. This customized version refers to a modified translation of Latin American and European Spanish that was developed for a specific customer. Finally, the original North American English version of the FIRO-B instrument was used in the United States.

The data in this report come from two sources. The primary sample collected for this study consists of participants using the instrument commercially between January 1, 2011, and August 1, 2013. This database is subsequently referred to as the *commercial sample*. A second sample, collected during the development of the FIRO Business instrument (Herk et al., 2009), which gathered normative data across several countries, was used here. It is referred to herein as the *international norm sample* (INS). The INS is included primarily

to serve as an independent check on the consistency of the commercial data. Given that the commercial database is a sample of convenience and not necessarily representative of an ideal cross section of our populations of interest, the INS allows us to determine whether any differences across samples may be meaningful or warrant further investigation. For example, if mean scores in our commercial sample differ substantially from mean scores in the corresponding translation in the INS, then further investigation is warranted. Conversely, if mean scores generally correspond, we can gain confidence that our commercial sample is not uniquely biased.

A review of the assessment languages represented in the commercial sample is presented in Table 2. As shown, reasonable sample sizes were obtained for a number of languages. Relatively small sample sizes were obtained for the Traditional Chinese translation and the Swedish translation. These smaller sample sizes were noted; however, both languages were included in all subsequent analyses. For comparison purposes, Table 3 shows the representation of assessment languages in the INS. Note that the commercial sample contains data from four countries not represented in the INS.

TABLE 2. LANGUAGES REPRESENTED IN THE COMMERCIAL SAMPLE

| Assessment Language | <i>n</i> |
|-------------------------|----------|
| Chinese, Simplified* | 360 |
| Chinese, Traditional* | 75 |
| Danish | 436 |
| Dutch | 216 |
| English, European | 18,323 |
| English, North American | 112,975 |
| French | 661 |
| German | 688 |
| Russian* | 440 |
| Spanish, Customized**† | 662 |
| Spanish, European | 605 |
| Spanish, Latin American | 206 |
| Swedish | 91 |

Note: *N* = 135,738.

*Represented in the commercial sample but not the INS.

†A client-specific translation of Latin American and European Spanish.

These languages are marked with an asterisk in Table 2. A complete description of the INS can be found in Herk et al. (2009).

Again, given that the commercial sample is one of convenience, participants had the option of not providing demographic information during completion of the assessment. We attempted to compile as much demographic information as possible through partnerships with our highest-volume distributors. We are grateful to CCL and OPP for providing international demographic information from their databases to be merged with the commercial database. Even after this effort, demographic information was fairly limited across languages.

Table 4 suggests that male representation tends to be stronger across most languages. Since the INS was a targeted sample, gender distribution is nearly equal across assessment languages, as shown in Table 5.

Table 6 displays the age distribution by assessment language. As noted above, age data are limited in some cases. Nonetheless, a snapshot of this data is still useful for understanding our samples. Of greatest note, our Traditional Chinese sample had only five participants reporting age.

TABLE 4. GENDER COMPOSITION OF THE COMMERCIAL SAMPLE

| Assessment Language | Women | | Men | |
|-------------------------|----------|------|----------|------|
| | <i>n</i> | % | <i>n</i> | % |
| Chinese, Simplified | 168 | 46.7 | 192 | 53.3 |
| Chinese, Traditional | 40 | 53.3 | 35 | 46.7 |
| Danish | 151 | 34.6 | 285 | 65.4 |
| Dutch | 53 | 24.5 | 163 | 75.5 |
| English, European | 7,438 | 40.6 | 10,885 | 59.4 |
| English, North American | 46,458 | 41.1 | 66,517 | 58.9 |
| French | 285 | 43.1 | 376 | 56.9 |
| German | 169 | 24.6 | 519 | 75.4 |
| Russian | 198 | 45.0 | 242 | 55.0 |
| Spanish, Customized | 218 | 32.9 | 444 | 67.1 |
| Spanish, European | 229 | 37.9 | 376 | 62.1 |
| Spanish, Latin American | 98 | 47.6 | 108 | 52.4 |
| Swedish | 46 | 50.5 | 45 | 49.5 |

Note: *N* = 135,738 (women *n* = 55,551; men *n* = 80,187).

TABLE 3. LANGUAGES REPRESENTED IN THE INTERNATIONAL NORM SAMPLE

| Assessment Language | <i>n</i> |
|-------------------------|----------|
| Danish | 262 |
| Dutch | 272 |
| English, European | 367 |
| English, North American | 399 |
| French | 253 |
| German | 204 |
| Portuguese, Brazilian | 289 |
| Spanish, European | 252 |
| Spanish, Latin American | 257 |
| Swedish | 246 |

Note: *N* = 2,801.

TABLE 5. GENDER COMPOSITION OF THE INTERNATIONAL NORM SAMPLE

| Assessment Language | Women | | Men | |
|-------------------------|----------|------|----------|------|
| | <i>n</i> | % | <i>n</i> | % |
| Danish | 131 | 50.0 | 131 | 50.0 |
| Dutch | 136 | 50.0 | 136 | 50.0 |
| English, European | 183 | 49.9 | 184 | 50.1 |
| English, North American | 200 | 50.1 | 199 | 49.9 |
| French | 127 | 50.2 | 126 | 49.8 |
| German | 103 | 50.5 | 101 | 49.5 |
| Portuguese, Brazilian | 145 | 50.2 | 144 | 49.8 |
| Spanish, European | 126 | 50.0 | 126 | 50.0 |
| Spanish, Latin American | 128 | 49.8 | 129 | 50.2 |
| Swedish | 123 | 50.0 | 123 | 50.0 |

Note: *N* = 2,801 (women *n* = 1,402; men *n* = 1,399).

TABLE 6. AGE DISTRIBUTION BY LANGUAGE FOR THE COMMERCIAL SAMPLE

| Assessment Language | <i>n</i> | Mean Age | <i>SD</i> |
|-------------------------|----------|----------|-----------|
| Chinese, Simplified | 146 | 35.07 | 7.73 |
| Chinese, Traditional | 5 | 24.60 | 1.82 |
| Danish | 410 | 44.11 | 8.00 |
| Dutch | 211 | 40.21 | 7.95 |
| English, European | 15,810 | 40.70 | 8.66 |
| English, North American | 81,993 | 41.22 | 10.20 |
| French | 164 | 39.57 | 7.31 |
| German | 604 | 41.29 | 7.66 |
| Russian | 239 | 37.10 | 6.47 |
| Spanish, Customized | 600 | 40.38 | 7.44 |
| Spanish, European | 532 | 42.11 | 9.36 |
| Spanish, Latin American | 153 | 41.13 | 8.69 |
| Swedish | 37 | 38.46 | 10.43 |

Note: *N* = 100,904.

For comparison purposes, the demographics of the INS are presented in Table 7. Both sets of samples have mean ages in the thirties and early forties. The commercial sample tends to skew slightly older than the INS, with the strongest differences arising in the Spanish translations.

MEAN SCORES ACROSS LANGUAGES

One of the primary indicators that the assessment has been translated appropriately and is functioning adequately around the globe is whether mean assessment scores remain relatively consistent across languages. Certainly, due to sampling variations and other forms of non-construct-related error, some differences in mean scores are expected. Although a complex and varied academic literature has suggested that certain cultures may be expected to respond to instruments such as the FIRO-B differently than others, by and large we have observed consistency in the performance of our instruments

TABLE 7. AGE DISTRIBUTION BY LANGUAGE FOR THE INTERNATIONAL NORM SAMPLE

| Assessment Language | <i>n</i> | Mean Age | <i>SD</i> |
|-------------------------|----------|----------|-----------|
| Danish | 262 | 36.12 | 8.90 |
| Dutch | 272 | 35.63 | 8.61 |
| English, European | 367 | 34.62 | 10.35 |
| English, North American | 399 | 41.15 | 11.38 |
| French | 253 | 32.01 | 8.48 |
| German | 204 | 37.20 | 10.07 |
| Portuguese, Brazilian | 289 | 30.17 | 11.38 |
| Spanish, European | 252 | 33.04 | 7.63 |
| Spanish, Latin American | 257 | 31.53 | 8.73 |
| Swedish | 246 | 37.54 | 10.62 |

Note: *N* = 2,801.

across cultures. Table 8 shows means and standard deviations for scale scores in the commercial sample.

Figure 1 provides a different perspective on the distribution of scale scores by language. Scoring across languages tends to be fairly consistent; however, some interesting results are evident. Languages used in North America (Latin American Spanish and North American English) have uniformly lower mean scores than the other languages. The Danish results for Expressed Affection and Wanted Affection are also notable. Mean scores on those two scales are the lowest of all the languages and represent a substantial drop-off from Danish scores on the other scales. Despite a few anomalies, the trends observed with respect to the relative magnitude of each scale are consistent across languages. Similar trends are observed in the INS (see Table 9 and Figure 2). Again, languages used in North America tend to have lower means and are notably lower than the other languages on both Expressed Control and Wanted Control.

TABLE 8. MEANS AND STANDARD DEVIATIONS FOR SCALE SCORES IN THE COMMERCIAL SAMPLE

| Assessment Language | n | Expressed Inclusion | | | Wanted Inclusion | | | Expressed Control | | | Wanted Control | | | Expressed Affection | | | Wanted Affection | | |
|-------------------------|---------|---------------------|------|-------|------------------|------|-------|-------------------|------|-------|----------------|------|-------|---------------------|------|-------|------------------|------|-------|
| | | Mean Score | SD | d | Mean Score | SD | d | Mean Score | SD | d | Mean Score | SD | d | Mean Score | SD | d | Mean Score | SD | d |
| Chinese, Simplified | 360 | 5.64 | 1.80 | 0.58 | 4.98 | 3.28 | -0.50 | 5.58 | 2.35 | -0.59 | 4.30 | 2.05 | -0.44 | 5.88 | 2.46 | -0.71 | 6.58 | 2.37 | -0.67 |
| Chinese, Traditional | 75 | 4.41 | 1.63 | -0.02 | 3.91 | 3.53 | -0.18 | 4.01 | 2.40 | 0.00 | 4.91 | 1.80 | -0.73 | 4.72 | 2.41 | -0.23 | 6.59 | 2.56 | 0.68 |
| Danish | 436 | 5.80 | 1.15 | -0.65 | 3.19 | 1.54 | 0.04 | 6.05 | 1.23 | -0.76 | 5.27 | 1.38 | -0.90 | 2.78 | 2.08 | 0.57 | 3.33 | 1.78 | 0.67 |
| Dutch | 216 | 5.50 | 1.40 | -0.52 | 4.52 | 1.89 | -0.36 | 6.06 | 1.61 | -0.77 | 5.65 | 1.40 | -1.08 | 5.24 | 2.35 | -0.44 | 6.42 | 2.01 | -0.61 |
| English, European | 18,323 | 5.62 | 1.37 | -0.60 | 4.12 | 1.92 | -0.25 | 6.10 | 1.48 | -0.82 | 5.02 | 1.46 | -0.81 | 4.35 | 2.31 | -0.08 | 4.93 | 2.04 | 0.01 |
| English, North American | 112,975 | 4.37 | 2.18 | — | 3.31 | 3.37 | — | 4.01 | 2.68 | — | 3.35 | 2.14 | — | 4.16 | 2.42 | — | 4.95 | 2.42 | — |
| French | 661 | 5.81 | 1.25 | -0.66 | 4.55 | 1.93 | -0.37 | 6.31 | 1.57 | -0.86 | 5.06 | 1.60 | -0.80 | 4.40 | 2.38 | -0.10 | 5.23 | 2.10 | -0.12 |
| German | 688 | 5.35 | 1.43 | -0.45 | 4.14 | 1.86 | -0.25 | 5.92 | 1.51 | -0.72 | 4.72 | 1.21 | -0.64 | 4.80 | 2.18 | -0.26 | 5.40 | 1.99 | -0.19 |
| Russian | 440 | 4.22 | 1.84 | 0.07 | 3.43 | 3.08 | -0.04 | 6.20 | 2.36 | -0.82 | 4.91 | 2.07 | -0.73 | 4.46 | 2.32 | -0.13 | 4.47 | 2.38 | 0.20 |
| Spanish, Customized | 662 | 5.71 | 1.33 | -0.61 | 4.27 | 1.89 | -0.28 | 6.08 | 1.48 | -0.77 | 4.91 | 1.63 | -0.73 | 4.86 | 2.35 | -0.29 | 5.61 | 1.91 | -0.27 |
| Spanish, European | 605 | 5.21 | 1.41 | -0.38 | 4.18 | 1.71 | -0.26 | 6.68 | 1.51 | -1.00 | 5.49 | 1.56 | -1.00 | 5.44 | 2.53 | -0.53 | 5.75 | 2.05 | -0.33 |
| Spanish, Latin American | 206 | 4.44 | 2.11 | -0.03 | 2.84 | 3.11 | 0.14 | 4.20 | 2.51 | -0.07 | 3.21 | 1.95 | 0.06 | 3.98 | 2.28 | 0.07 | 4.76 | 2.04 | 0.08 |
| Swedish | 91 | 5.44 | 1.67 | -0.49 | 3.89 | 1.88 | -0.17 | 5.40 | 1.82 | -0.52 | 5.27 | 1.71 | -0.90 | 5.51 | 2.25 | -0.56 | 5.92 | 1.66 | -0.40 |

Note: Cohen's *d* values were calculated in reference to the North American English sample.

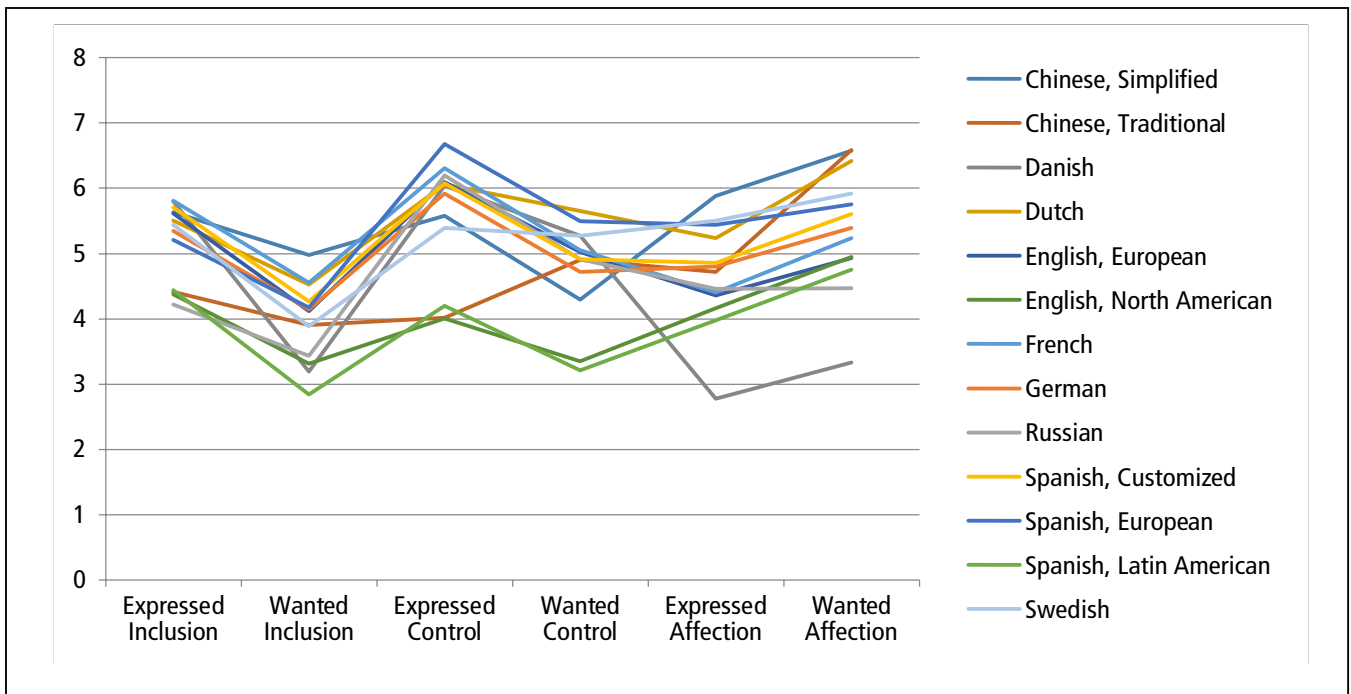


Figure 1. Mean Scale Scores Across Languages—Commercial Sample

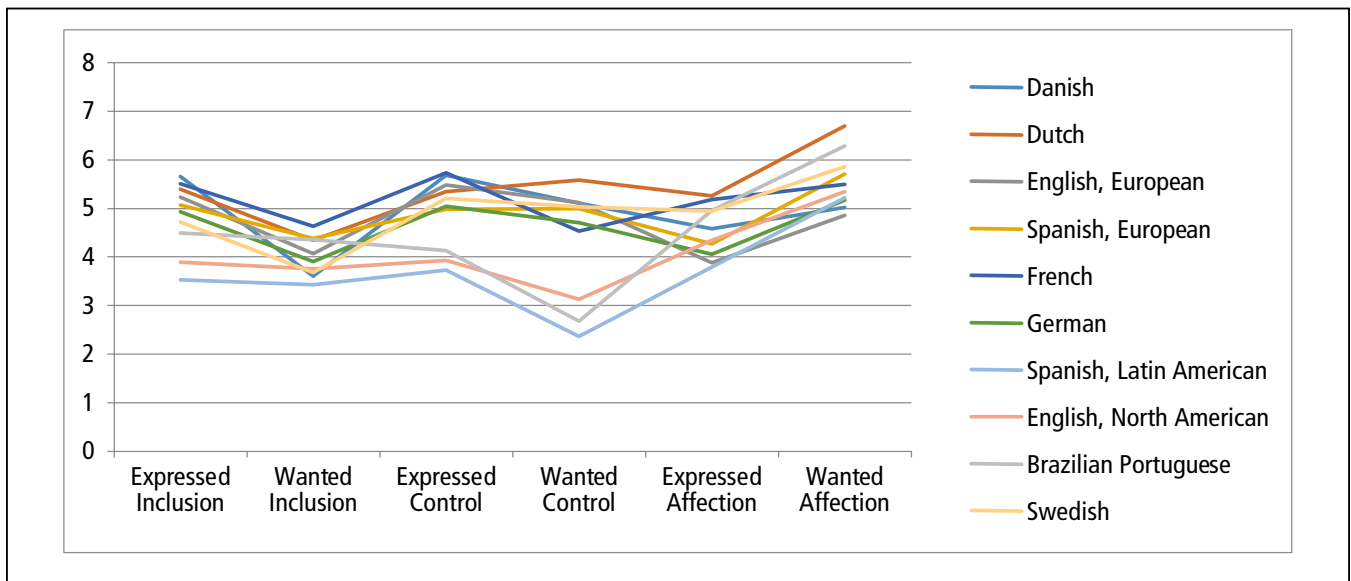


Figure 2. Mean Scale Scores Across Languages—International Norm Sample

Tables 10 and 11 represent Total Need, Total Expressed, Total Wanted, and Overall scores. Since these scores are simple sums of the subscales, no significant new trends are observed. Table 10 shows total scores for the commercial sample. Again, Danish scores for Total Affection are substantially lower than for other languages. Table 11 shows total scores for the INS. As noted, limited demographic infor-

mation was available for the commercial sample. However, gender composes arguably the most important demographic information in our sample. Table 12 further describes the results above by showing mean scale scores broken down by gender for the commercial sample. Table 13 shows mean scale scores broken down by gender for the INS.

TABLE 9. MEANS AND STANDARD DEVIATIONS FOR SCALE SCORES IN THE INTERNATIONAL NORM SAMPLE

| Assessment Language | n | Expressed Inclusion | | | Wanted Inclusion | | | Expressed Control | | | Wanted Control | | | Expressed Affection | | | Wanted Affection | | |
|-------------------------|-----|---------------------|------|-------|------------------|------|-------|-------------------|------|-------|----------------|------|-------|---------------------|------|-------|------------------|------|-------|
| | | Mean Score | SD | d | Mean Score | SD | d | Mean Score | SD | d | Mean Score | SD | d | Mean Score | SD | d | Mean Score | SD | d |
| Danish | 262 | 5.65 | 1.26 | -0.88 | 3.61 | 1.89 | 0.05 | 5.69 | 1.60 | -0.73 | 5.11 | 1.50 | -1.02 | 4.58 | 2.47 | -0.10 | 5.02 | 1.97 | 0.15 |
| Dutch | 272 | 5.39 | 1.45 | -0.73 | 4.34 | 2.15 | -0.20 | 5.35 | 1.79 | -0.58 | 5.59 | 1.77 | -1.21 | 5.26 | 2.25 | -0.38 | 6.70 | 1.88 | -0.62 |
| English, European | 367 | 5.23 | 1.46 | -0.68 | 4.07 | 2.21 | -0.11 | 5.48 | 1.77 | -0.66 | 5.11 | 1.82 | -0.98 | 3.89 | 2.23 | 0.19 | 4.86 | 2.06 | 0.22 |
| English, North American | 399 | 3.90 | 2.35 | — | 3.76 | 3.30 | — | 3.92 | 2.81 | — | 3.13 | 2.18 | — | 4.34 | 2.54 | — | 5.35 | 2.37 | — |
| French | 253 | 5.51 | 1.34 | -0.80 | 4.63 | 2.19 | -0.30 | 5.74 | 1.86 | -0.73 | 4.53 | 1.82 | -0.68 | 5.18 | 2.14 | -0.35 | 5.49 | 2.03 | -0.06 |
| German | 204 | 4.93 | 1.55 | -0.49 | 3.91 | 2.32 | -0.05 | 5.05 | 2.04 | -0.44 | 4.71 | 1.83 | -0.76 | 4.05 | 2.16 | 0.12 | 5.17 | 2.32 | 0.08 |
| Portuguese, Brazilian | 289 | 4.50 | 2.24 | -0.26 | 4.36 | 3.23 | -0.18 | 4.13 | 2.77 | -0.08 | 2.67 | 2.03 | 0.21 | 4.95 | 2.82 | -0.23 | 6.28 | 2.37 | 0.08 |
| Spanish, European | 252 | 5.07 | 1.51 | -0.57 | 4.38 | 2.36 | -0.21 | 4.99 | 1.84 | -0.43 | 5.00 | 1.66 | -0.93 | 4.27 | 2.39 | 0.03 | 5.71 | 2.15 | -0.16 |
| Spanish, Latin American | 257 | 3.53 | 2.25 | 0.16 | 3.43 | 3.38 | 0.10 | 3.72 | 2.88 | 0.07 | 2.36 | 1.88 | 0.37 | 3.79 | 2.46 | 0.22 | 5.22 | 2.19 | 0.06 |
| Swedish | 246 | 4.72 | 1.47 | -0.40 | 3.67 | 2.21 | 0.03 | 5.21 | 1.78 | -0.52 | 5.03 | 1.92 | -0.91 | 4.94 | 2.23 | -0.25 | 5.85 | 1.85 | -0.23 |

Note: Cohen's *d* values were calculated in reference to the North American English sample.

TABLE 10. COMMERCIAL SAMPLE TOTAL SCORES

| Assessment Language | n | Total Inclusion | | | Total Control | | | Total Affection | | | Total Expressed | | | Total Wanted | | | Overall | | |
|-------------------------|---------|-----------------|------|-------|---------------|------|-------|-----------------|------|-------|-----------------|------|-------|--------------|------|-------|------------|------|-------|
| | | Mean Score | SD | d | Mean Score | SD | d | Mean Score | SD | d | Mean Score | SD | d | Mean Score | SD | d | Mean Score | SD | d |
| Chinese, Simplified | 360 | 10.62 | 4.44 | -0.60 | 9.88 | 3.08 | -0.74 | 12.46 | 4.36 | -0.78 | 17.10 | 5.15 | -0.86 | 15.86 | 5.60 | -0.73 | 32.96 | 9.66 | -0.90 |
| Chinese, Traditional | 75 | 8.32 | 4.46 | -0.13 | 8.92 | 3.31 | -0.46 | 11.31 | 4.06 | -0.51 | 13.15 | 5.00 | -0.11 | 15.40 | 5.63 | -0.65 | 28.55 | 9.38 | -0.45 |
| Danish | 436 | 8.99 | 2.22 | -0.27 | 11.32 | 1.74 | -1.16 | 6.11 | 3.45 | 0.70 | 14.62 | 3.00 | -0.39 | 11.79 | 3.27 | -0.03 | 26.42 | 5.31 | -0.23 |
| Dutch | 216 | 10.03 | 2.82 | -0.48 | 11.71 | 2.06 | -1.27 | 11.66 | 3.80 | -0.59 | 16.80 | 3.86 | -0.80 | 16.60 | 3.63 | -0.86 | 33.39 | 6.55 | -0.95 |
| English, European | 18,323 | 9.74 | 2.81 | -0.44 | 11.12 | 2.09 | -1.15 | 9.28 | 3.89 | -0.04 | 16.07 | 3.57 | -0.69 | 14.07 | 3.85 | -0.44 | 30.14 | 6.53 | -0.64 |
| English, North American | 112,975 | 7.68 | 4.92 | — | 7.35 | 3.42 | — | 9.11 | 4.32 | — | 12.54 | 5.29 | — | 11.61 | 5.80 | — | 24.15 | 9.77 | — |
| French | 661 | 10.36 | 2.70 | -0.54 | 11.36 | 2.20 | -1.17 | 9.64 | 4.01 | -0.12 | 16.52 | 3.59 | -0.75 | 14.84 | 4.04 | -0.56 | 31.36 | 6.71 | -0.74 |
| German | 688 | 9.49 | 2.76 | -0.37 | 10.64 | 1.83 | -0.96 | 10.20 | 3.73 | -0.25 | 16.07 | 3.62 | -0.67 | 14.26 | 3.62 | -0.46 | 30.33 | 6.37 | -0.63 |
| Russian | 440 | 7.65 | 4.34 | 0.01 | 11.11 | 3.06 | -1.10 | 8.93 | 4.10 | 0.04 | 14.88 | 4.73 | -0.44 | 12.81 | 5.38 | -0.21 | 27.70 | 8.81 | -0.36 |
| Spanish, Customized | 662 | 9.97 | 2.78 | -0.47 | 10.99 | 2.25 | -1.07 | 10.47 | 3.71 | -0.31 | 16.64 | 3.63 | -0.78 | 14.79 | 3.86 | -0.55 | 31.43 | 6.60 | -0.75 |
| Spanish, European | 605 | 9.38 | 2.63 | -0.35 | 12.18 | 2.18 | -1.41 | 11.19 | 4.19 | -0.48 | 17.33 | 3.90 | -0.91 | 15.42 | 3.72 | -0.66 | 32.75 | 6.81 | -0.88 |
| Spanish, Latin American | 206 | 7.28 | 4.60 | 0.08 | 7.41 | 3.06 | -0.02 | 8.74 | 3.69 | 0.09 | 12.62 | 4.98 | -0.01 | 10.82 | 4.96 | 0.14 | 23.43 | 8.56 | 0.07 |
| Swedish | 91 | 9.33 | 3.08 | -0.33 | 10.67 | 2.88 | -0.97 | 11.43 | 3.54 | -0.54 | 16.34 | 4.22 | -0.72 | 15.09 | 3.94 | -0.60 | 31.43 | 7.54 | -0.74 |

Note: Cohen's d values were calculated in reference to the North American English sample.

TABLE 11. INTERNATIONAL NORM SAMPLE TOTAL SCORES

| Assessment Language | n | Total Inclusion | | | Total Control | | | Total Affection | | | Total Expressed | | | Total Wanted | | | Overall | | |
|-------------------------|-----|-----------------|------|-------|---------------|------|-------|-----------------|------|-------|-----------------|------|-------|--------------|------|-------|------------|-------|-------|
| | | Mean Score | SD | d | Mean Score | SD | d | Mean Score | SD | d | Mean Score | SD | d | Mean Score | SD | d | Mean Score | SD | d |
| Danish | 262 | 9.26 | 2.58 | -0.39 | 10.80 | 2.07 | -1.32 | 9.61 | 3.92 | 0.02 | 15.92 | 3.65 | -0.79 | 13.74 | 3.83 | -0.29 | 29.66 | 6.12 | -0.63 |
| Dutch | 272 | 9.73 | 3.16 | -0.48 | 10.94 | 2.48 | -1.31 | 11.96 | 3.56 | -0.57 | 16.00 | 3.83 | -0.80 | 16.63 | 3.87 | -0.86 | 32.63 | 6.65 | -0.97 |
| English, European | 367 | 9.30 | 3.13 | -0.40 | 10.60 | 2.46 | -1.22 | 8.74 | 3.81 | 0.23 | 14.60 | 3.60 | -0.53 | 14.04 | 4.46 | -0.35 | 28.64 | 6.88 | -0.51 |
| English, N. American | 399 | 7.66 | 4.90 | — | 7.06 | 3.25 | — | 9.69 | 4.31 | — | 12.16 | 5.39 | — | 12.24 | 5.83 | — | 24.40 | 9.53 | — |
| French | 253 | 10.14 | 2.98 | -0.58 | 10.26 | 2.49 | -1.08 | 10.68 | 3.70 | -0.24 | 16.43 | 3.59 | -0.89 | 14.65 | 4.15 | -0.46 | 31.08 | 6.66 | -0.78 |
| German | 204 | 8.84 | 3.34 | -0.27 | 9.75 | 2.69 | -0.88 | 9.22 | 3.91 | 0.11 | 14.03 | 3.99 | -0.38 | 13.78 | 4.88 | -0.28 | 27.81 | 7.48 | -0.38 |
| Portuguese, Brazilian | 289 | 8.85 | 4.79 | -0.25 | 6.81 | 3.21 | 0.08 | 11.24 | 4.55 | -0.35 | 13.58 | 5.72 | -0.26 | 13.31 | 5.53 | -0.19 | 26.90 | 9.64 | -0.26 |
| Spanish, Customized | 662 | 5.71 | 1.33 | -0.61 | 4.27 | 1.89 | -0.28 | 6.08 | 1.48 | -0.77 | 4.91 | 1.63 | -0.73 | 4.86 | 2.35 | -0.29 | 5.61 | 1.91 | -0.27 |
| Spanish, European | 252 | 9.45 | 3.24 | -0.41 | 9.98 | 2.49 | -0.98 | 9.98 | 3.87 | -0.07 | 14.33 | 3.98 | -0.44 | 15.08 | 4.45 | -0.53 | 29.41 | 7.29 | -0.57 |
| Spanish, Latin American | 257 | 6.96 | 5.01 | 0.14 | 6.08 | 3.63 | 0.29 | 9.01 | 4.11 | 0.16 | 11.05 | 5.66 | 0.20 | 11.00 | 5.69 | 0.21 | 22.05 | 10.24 | 0.24 |
| Swedish | 246 | 8.39 | 3.04 | -0.17 | 10.24 | 2.51 | -1.06 | 10.80 | 3.53 | -0.28 | 14.87 | 3.60 | -0.57 | 14.56 | 4.27 | -0.44 | 29.43 | 6.54 | -0.59 |

Note: Cohen's d values were calculated in reference to the North American English sample.

TABLE 12. MEAN SCALE SCORES BY GENDER: COMMERCIAL SAMPLE

| Assessment Language | Scale | Female | | | Male | | |
|----------------------|---------------------|----------|------------|-----------|----------|------------|-----------|
| | | <i>n</i> | Mean Score | <i>SD</i> | <i>n</i> | Mean Score | <i>SD</i> |
| Chinese, Simplified | Expressed Inclusion | 168 | 5.68 | 1.73 | 192 | 5.60 | 1.86 |
| | Wanted Inclusion | 168 | 5.04 | 3.28 | 192 | 4.93 | 3.29 |
| | Expressed Control | 168 | 5.16 | 2.35 | 192 | 5.95 | 2.29 |
| | Wanted Control | 168 | 3.99 | 2.09 | 192 | 4.56 | 1.99 |
| | Expressed Affection | 168 | 5.86 | 2.38 | 192 | 5.90 | 2.54 |
| | Wanted Affection | 168 | 6.68 | 2.26 | 192 | 6.48 | 2.46 |
| | Total Inclusion | 168 | 10.72 | 4.37 | 192 | 10.53 | 4.50 |
| | Total Control | 168 | 9.15 | 3.02 | 192 | 10.51 | 3.00 |
| | Total Affection | 168 | 12.55 | 4.17 | 192 | 12.39 | 4.53 |
| | Total Expressed | 168 | 16.70 | 4.92 | 192 | 17.45 | 5.33 |
| | Total Wanted | 168 | 15.72 | 5.33 | 192 | 15.97 | 5.83 |
| Total Overall | 168 | 32.42 | 9.26 | 192 | 33.42 | 9.99 | |
| Chinese, Traditional | Expressed Inclusion | 40 | 4.38 | 1.55 | 35 | 4.46 | 1.74 |
| | Wanted Inclusion | 40 | 3.75 | 3.49 | 35 | 4.09 | 3.62 |
| | Expressed Control | 40 | 4.20 | 2.40 | 35 | 3.80 | 2.42 |
| | Wanted Control | 40 | 5.20 | 1.88 | 35 | 4.57 | 1.67 |
| | Expressed Affection | 40 | 4.30 | 2.36 | 35 | 5.20 | 2.42 |
| | Wanted Affection | 40 | 6.78 | 2.86 | 35 | 6.37 | 2.20 |
| | Total Inclusion | 40 | 8.13 | 4.15 | 35 | 8.54 | 4.85 |
| | Total Control | 40 | 9.40 | 3.14 | 35 | 8.37 | 3.46 |
| | Total Affection | 40 | 11.08 | 4.18 | 35 | 11.57 | 3.96 |
| | Total Expressed | 40 | 12.88 | 4.40 | 35 | 13.46 | 5.66 |
| | Total Wanted | 40 | 15.73 | 5.46 | 35 | 15.03 | 5.88 |
| Total Overall | 40 | 28.60 | 8.51 | 35 | 28.49 | 10.41 | |
| Danish | Expressed Inclusion | 151 | 5.76 | 1.11 | 285 | 5.82 | 1.17 |
| | Wanted Inclusion | 151 | 3.46 | 1.74 | 285 | 3.05 | 1.40 |
| | Expressed Control | 151 | 5.71 | 1.20 | 285 | 6.22 | 1.20 |
| | Wanted Control | 151 | 5.32 | 1.32 | 285 | 5.25 | 1.40 |
| | Expressed Affection | 151 | 3.13 | 2.27 | 285 | 2.59 | 1.95 |
| | Wanted Affection | 151 | 3.70 | 1.79 | 285 | 3.13 | 1.74 |
| | Total Inclusion | 151 | 9.22 | 2.47 | 285 | 8.87 | 2.08 |
| | Total Control | 151 | 11.03 | 1.64 | 285 | 11.47 | 1.78 |
| | Total Affection | 151 | 6.83 | 3.67 | 285 | 5.72 | 3.27 |
| | Total Expressed | 151 | 14.60 | 3.20 | 285 | 14.64 | 2.90 |
| | Total Wanted | 151 | 12.48 | 3.54 | 285 | 11.42 | 3.06 |
| Total Overall | 151 | 27.08 | 5.90 | 285 | 26.06 | 4.95 | |

(cont'd)

TABLE 12. MEAN SCALE SCORES BY GENDER: COMMERCIAL SAMPLE (CONT'D)

| Assessment Language | Scale | Female | | | Male | | |
|--------------------------------|---------------------|----------|------------|-----------|----------|------------|-----------|
| | | <i>n</i> | Mean Score | <i>SD</i> | <i>n</i> | Mean Score | <i>SD</i> |
| Dutch | Expressed Inclusion | 53 | 5.64 | 1.21 | 163 | 5.46 | 1.46 |
| | Wanted Inclusion | 53 | 4.26 | 1.67 | 163 | 4.61 | 1.95 |
| | Expressed Control | 53 | 5.85 | 1.68 | 163 | 6.12 | 1.58 |
| | Wanted Control | 53 | 5.68 | 1.34 | 163 | 5.64 | 1.42 |
| | Expressed Affection | 53 | 4.87 | 2.19 | 163 | 5.36 | 2.39 |
| | Wanted Affection | 53 | 6.17 | 2.09 | 163 | 6.50 | 1.98 |
| | Total Inclusion | 53 | 9.91 | 2.47 | 163 | 10.07 | 2.93 |
| | Total Control | 53 | 11.53 | 2.23 | 163 | 11.77 | 2.01 |
| | Total Affection | 53 | 11.04 | 3.59 | 163 | 11.86 | 3.86 |
| | Total Expressed | 53 | 16.36 | 3.63 | 163 | 16.94 | 3.94 |
| | Total Wanted | 53 | 16.11 | 3.41 | 163 | 16.75 | 3.70 |
| | Total Overall | 53 | 32.47 | 6.08 | 163 | 33.69 | 6.69 |
| English, European | Expressed Inclusion | 7,438 | 5.64 | 1.35 | 10,885 | 5.60 | 1.38 |
| | Wanted Inclusion | 7,438 | 4.17 | 1.97 | 10,885 | 4.08 | 1.88 |
| | Expressed Control | 7,438 | 5.78 | 1.56 | 10,885 | 6.31 | 1.38 |
| | Wanted Control | 7,438 | 4.95 | 1.43 | 10,885 | 5.07 | 1.48 |
| | Expressed Affection | 7,438 | 4.51 | 2.21 | 10,885 | 4.25 | 2.37 |
| | Wanted Affection | 7,438 | 5.05 | 1.94 | 10,885 | 4.85 | 2.10 |
| | Total Inclusion | 7,438 | 9.82 | 2.86 | 10,885 | 9.69 | 2.78 |
| | Total Control | 7,438 | 10.73 | 2.14 | 10,885 | 11.39 | 2.01 |
| | Total Affection | 7,438 | 9.56 | 3.71 | 10,885 | 9.10 | 4.00 |
| | Total Expressed | 7,438 | 15.93 | 3.49 | 10,885 | 16.16 | 3.62 |
| | Total Wanted | 7,438 | 14.17 | 3.81 | 10,885 | 14.01 | 3.87 |
| | Total Overall | 7,438 | 30.10 | 6.43 | 10,885 | 30.17 | 6.59 |
| English, North American | Expressed Inclusion | 46,458 | 4.49 | 2.14 | 66,517 | 4.29 | 2.20 |
| | Wanted Inclusion | 46,458 | 3.39 | 3.40 | 66,517 | 3.26 | 3.34 |
| | Expressed Control | 46,458 | 3.56 | 2.64 | 66,517 | 4.32 | 2.67 |
| | Wanted Control | 46,458 | 3.33 | 2.10 | 66,517 | 3.36 | 2.17 |
| | Expressed Affection | 46,458 | 4.42 | 2.39 | 66,517 | 3.98 | 2.42 |
| | Wanted Affection | 46,458 | 5.22 | 2.30 | 66,517 | 4.76 | 2.48 |
| | Total Inclusion | 46,458 | 7.88 | 4.93 | 66,517 | 7.55 | 4.91 |
| | Total Control | 46,458 | 6.90 | 3.39 | 66,517 | 7.67 | 3.40 |
| | Total Affection | 46,458 | 9.64 | 4.19 | 66,517 | 8.74 | 4.36 |
| | Total Expressed | 46,458 | 12.48 | 5.20 | 66,517 | 12.58 | 5.36 |
| | Total Wanted | 46,458 | 11.94 | 5.78 | 66,517 | 11.38 | 5.80 |
| | Total Overall | 46,458 | 24.42 | 9.70 | 66,517 | 23.96 | 9.82 |

(cont'd)

TABLE 12. MEAN SCALE SCORES BY GENDER: COMMERCIAL SAMPLE (CONT'D)

| Assessment Language | Scale | Female | | | Male | | |
|---------------------|---------------------|----------|------------|-----------|----------|------------|-----------|
| | | <i>n</i> | Mean Score | <i>SD</i> | <i>n</i> | Mean Score | <i>SD</i> |
| French | Expressed Inclusion | 285 | 5.77 | 1.25 | 376 | 5.84 | 1.26 |
| | Wanted Inclusion | 285 | 4.36 | 1.83 | 376 | 4.69 | 1.99 |
| | Expressed Control | 285 | 5.93 | 1.68 | 376 | 6.59 | 1.42 |
| | Wanted Control | 285 | 5.05 | 1.67 | 376 | 5.06 | 1.54 |
| | Expressed Affection | 285 | 4.22 | 2.29 | 376 | 4.54 | 2.44 |
| | Wanted Affection | 285 | 5.13 | 2.09 | 376 | 5.32 | 2.10 |
| | Total Inclusion | 285 | 10.13 | 2.58 | 376 | 10.53 | 2.78 |
| | Total Control | 285 | 10.98 | 2.32 | 376 | 11.65 | 2.06 |
| | Total Affection | 285 | 9.35 | 3.95 | 376 | 9.85 | 4.05 |
| | Total Expressed | 285 | 15.92 | 3.50 | 376 | 16.97 | 3.60 |
| | Total Wanted | 285 | 14.54 | 3.97 | 376 | 15.07 | 4.08 |
| | Total Overall | 285 | 30.46 | 6.51 | 376 | 32.04 | 6.78 |
| German | Expressed Inclusion | 169 | 5.24 | 1.30 | 519 | 5.38 | 1.47 |
| | Wanted Inclusion | 169 | 4.14 | 2.08 | 519 | 4.14 | 1.79 |
| | Expressed Control | 169 | 5.54 | 1.47 | 519 | 6.05 | 1.50 |
| | Wanted Control | 169 | 4.67 | 1.17 | 519 | 4.73 | 1.23 |
| | Expressed Affection | 169 | 4.75 | 2.14 | 519 | 4.82 | 2.19 |
| | Wanted Affection | 169 | 5.60 | 1.92 | 519 | 5.33 | 2.01 |
| | Total Inclusion | 169 | 9.38 | 2.94 | 519 | 9.53 | 2.70 |
| | Total Control | 169 | 10.22 | 1.77 | 519 | 10.78 | 1.83 |
| | Total Affection | 169 | 10.35 | 3.75 | 519 | 10.15 | 3.72 |
| | Total Expressed | 169 | 15.53 | 3.29 | 519 | 16.25 | 3.71 |
| | Total Wanted | 169 | 14.42 | 3.81 | 519 | 14.21 | 3.55 |
| | Total Overall | 169 | 29.95 | 6.41 | 519 | 30.45 | 6.35 |
| Russian | Expressed Inclusion | 198 | 4.28 | 1.91 | 242 | 4.18 | 1.79 |
| | Wanted Inclusion | 198 | 3.42 | 3.09 | 242 | 3.44 | 3.09 |
| | Expressed Control | 198 | 5.89 | 2.37 | 242 | 6.45 | 2.32 |
| | Wanted Control | 198 | 4.76 | 2.00 | 242 | 5.04 | 2.13 |
| | Expressed Affection | 198 | 4.28 | 2.15 | 242 | 4.62 | 2.45 |
| | Wanted Affection | 198 | 4.59 | 2.24 | 242 | 4.37 | 2.49 |
| | Total Inclusion | 198 | 7.70 | 4.43 | 242 | 7.62 | 4.28 |
| | Total Control | 198 | 10.65 | 3.26 | 242 | 11.49 | 2.83 |
| | Total Affection | 198 | 8.87 | 3.83 | 242 | 8.98 | 4.32 |
| | Total Expressed | 198 | 14.44 | 4.77 | 242 | 15.24 | 4.67 |
| | Total Wanted | 198 | 12.78 | 5.41 | 242 | 12.84 | 5.36 |
| | Total Overall | 198 | 27.22 | 8.98 | 242 | 28.09 | 8.66 |

(cont'd)

TABLE 12. MEAN SCALE SCORES BY GENDER: COMMERCIAL SAMPLE (CONT'D)

| Assessment Language | Scale | Female | | | Male | | |
|-------------------------|---------------------|----------|------------|-----------|----------|------------|-----------|
| | | <i>n</i> | Mean Score | <i>SD</i> | <i>n</i> | Mean Score | <i>SD</i> |
| Spanish, Customized | Expressed Inclusion | 218 | 5.72 | 1.29 | 444 | 5.70 | 1.35 |
| | Wanted Inclusion | 218 | 4.43 | 2.06 | 444 | 4.19 | 1.80 |
| | Expressed Control | 218 | 5.89 | 1.54 | 444 | 6.17 | 1.44 |
| | Wanted Control | 218 | 4.80 | 1.59 | 444 | 4.97 | 1.65 |
| | Expressed Affection | 218 | 4.76 | 2.29 | 444 | 4.91 | 2.38 |
| | Wanted Affection | 218 | 5.64 | 1.90 | 444 | 5.60 | 1.92 |
| | Total Inclusion | 218 | 10.15 | 2.87 | 444 | 9.89 | 2.73 |
| | Total Control | 218 | 10.69 | 2.24 | 444 | 11.14 | 2.23 |
| | Total Affection | 218 | 10.39 | 3.74 | 444 | 10.50 | 3.70 |
| | Total Expressed | 218 | 16.38 | 3.38 | 444 | 16.77 | 3.75 |
| | Total Wanted | 218 | 14.86 | 3.83 | 444 | 14.75 | 3.89 |
| Total Overall | 218 | 31.24 | 6.41 | 444 | 31.52 | 6.69 | |
| Spanish, European | Expressed Inclusion | 229 | 5.40 | 1.46 | 376 | 5.09 | 1.37 |
| | Wanted Inclusion | 229 | 4.53 | 1.93 | 376 | 3.96 | 1.53 |
| | Expressed Control | 229 | 6.51 | 1.54 | 376 | 6.79 | 1.49 |
| | Wanted Control | 229 | 5.33 | 1.53 | 376 | 5.59 | 1.57 |
| | Expressed Affection | 229 | 5.74 | 2.50 | 376 | 5.26 | 2.54 |
| | Wanted Affection | 229 | 6.13 | 1.97 | 376 | 5.52 | 2.07 |
| | Total Inclusion | 229 | 9.93 | 2.83 | 376 | 9.05 | 2.44 |
| | Total Control | 229 | 11.84 | 2.13 | 376 | 12.38 | 2.19 |
| | Total Affection | 229 | 11.86 | 4.03 | 376 | 10.78 | 4.25 |
| | Total Expressed | 229 | 17.65 | 4.02 | 376 | 17.14 | 3.82 |
| | Total Wanted | 229 | 15.99 | 3.81 | 376 | 15.07 | 3.63 |
| Total Overall | 229 | 33.63 | 6.92 | 376 | 32.21 | 6.70 | |
| Spanish, Latin American | Expressed Inclusion | 98 | 4.30 | 2.05 | 108 | 4.56 | 2.18 |
| | Wanted Inclusion | 98 | 2.79 | 3.00 | 108 | 2.90 | 3.21 |
| | Expressed Control | 98 | 4.11 | 2.66 | 108 | 4.28 | 2.38 |
| | Wanted Control | 98 | 3.22 | 1.73 | 108 | 3.20 | 2.13 |
| | Expressed Affection | 98 | 4.07 | 2.05 | 108 | 3.90 | 2.47 |
| | Wanted Affection | 98 | 5.03 | 1.80 | 108 | 4.51 | 2.22 |
| | Total Inclusion | 98 | 7.08 | 4.37 | 108 | 7.46 | 4.82 |
| | Total Control | 98 | 7.34 | 3.03 | 108 | 7.48 | 3.10 |
| | Total Affection | 98 | 9.10 | 3.14 | 108 | 8.41 | 4.10 |
| | Total Expressed | 98 | 12.48 | 4.65 | 108 | 12.74 | 5.29 |
| | Total Wanted | 98 | 11.04 | 4.66 | 108 | 10.61 | 5.23 |
| Total Overall | 98 | 23.52 | 7.82 | 108 | 23.35 | 9.21 | |

(cont'd)

TABLE 12. MEAN SCALE SCORES BY GENDER: COMMERCIAL SAMPLE (CONT'D)

| Assessment Language | Scale | Female | | | Male | | |
|---------------------|---------------------|----------|------------|-----------|----------|------------|-----------|
| | | <i>n</i> | Mean Score | <i>SD</i> | <i>n</i> | Mean Score | <i>SD</i> |
| Swedish | Expressed Inclusion | 46 | 5.48 | 1.39 | 45 | 5.40 | 1.92 |
| | Wanted Inclusion | 46 | 4.17 | 2.09 | 45 | 3.60 | 1.62 |
| | Expressed Control | 46 | 5.24 | 1.54 | 45 | 5.56 | 2.07 |
| | Wanted Control | 46 | 5.70 | 1.30 | 45 | 4.84 | 1.97 |
| | Expressed Affection | 46 | 5.67 | 2.12 | 45 | 5.33 | 2.39 |
| | Wanted Affection | 46 | 6.07 | 1.45 | 45 | 5.78 | 1.86 |
| | Total Inclusion | 46 | 9.65 | 3.07 | 45 | 9.00 | 3.09 |
| | Total Control | 46 | 10.93 | 2.14 | 45 | 10.40 | 3.49 |
| | Total Affection | 46 | 11.74 | 3.19 | 45 | 11.11 | 3.89 |
| | Total Expressed | 46 | 16.39 | 3.28 | 45 | 16.29 | 5.05 |
| | Total Wanted | 46 | 15.93 | 3.50 | 45 | 14.22 | 4.20 |
| | Total Overall | 46 | 32.33 | 6.16 | 45 | 30.51 | 8.70 |

An additional perspective on the internal validity of an instrument across cultures is evident through intercorrelations among its scales. As shown above, mean scores, save for a small number of anomalies, are consistent across translations of the FIRO-B instrument. Scale intercorrelations provide another lens on the interrelationships among scales, and

their consistency, across translations. These intercorrelations are presented in Tables 14 and 15. Across both samples, patterns of correlations are generally similar across translations. Further, these patterns are also similar to those observed by Hammer & Schnell (2000) and Schutz (1958).

TABLE 13. MEAN SCALE SCORES BY GENDER: INTERNATIONAL NORM SAMPLE

| Assessment Language | Scale | Female | | | Male | | |
|---------------------|---------------------|----------|------------|-----------|----------|------------|-----------|
| | | <i>n</i> | Mean Score | <i>SD</i> | <i>n</i> | Mean Score | <i>SD</i> |
| Danish | Expressed Inclusion | 131 | 5.69 | 1.26 | 131 | 5.62 | 1.26 |
| | Wanted Inclusion | 131 | 3.72 | 1.91 | 131 | 3.50 | 1.86 |
| | Expressed Control | 131 | 5.26 | 1.55 | 131 | 6.11 | 1.53 |
| | Wanted Control | 131 | 4.99 | 1.53 | 131 | 5.23 | 1.45 |
| | Expressed Affection | 131 | 5.13 | 2.40 | 131 | 4.04 | 2.43 |
| | Wanted Affection | 131 | 5.27 | 1.95 | 131 | 4.78 | 1.98 |
| | Total Inclusion | 131 | 9.40 | 2.72 | 131 | 9.11 | 2.43 |
| | Total Control | 131 | 10.25 | 2.11 | 131 | 11.34 | 1.88 |
| | Total Affection | 131 | 10.40 | 3.76 | 131 | 8.82 | 3.93 |
| | Total Expressed | 131 | 16.08 | 3.58 | 131 | 15.77 | 3.72 |
| | Total Wanted | 131 | 13.98 | 3.99 | 131 | 13.50 | 3.68 |
| | Total Overall | 131 | 30.05 | 6.12 | 131 | 29.27 | 6.12 |

(cont'd)

TABLE 13. MEAN SCALE SCORES BY GENDER—INTERNATIONAL NORM SAMPLE (CONT'D)

| Assessment Language | Scale | Female | | | Male | | |
|--------------------------------|---------------------|----------|------------|-----------|----------|------------|-----------|
| | | <i>n</i> | Mean Score | <i>SD</i> | <i>n</i> | Mean Score | <i>SD</i> |
| Dutch | Expressed Inclusion | 136 | 5.49 | 1.46 | 136 | 5.29 | 1.45 |
| | Wanted Inclusion | 136 | 4.20 | 1.92 | 136 | 4.49 | 2.36 |
| | Expressed Control | 136 | 5.02 | 1.66 | 136 | 5.68 | 1.85 |
| | Wanted Control | 136 | 5.79 | 1.69 | 136 | 5.38 | 1.83 |
| | Expressed Affection | 136 | 5.44 | 2.19 | 136 | 5.08 | 2.29 |
| | Wanted Affection | 136 | 6.80 | 1.75 | 136 | 6.60 | 1.99 |
| | Total Inclusion | 136 | 9.68 | 2.98 | 136 | 9.78 | 3.33 |
| | Total Control | 136 | 10.82 | 2.35 | 136 | 11.06 | 2.60 |
| | Total Affection | 136 | 12.24 | 3.35 | 136 | 11.68 | 3.76 |
| | Total Expressed | 136 | 15.95 | 3.70 | 136 | 16.05 | 3.97 |
| | Total Wanted | 136 | 16.79 | 3.61 | 136 | 16.47 | 4.13 |
| | Total Overall | 136 | 32.74 | 6.21 | 136 | 32.52 | 7.09 |
| English, European | Expressed Inclusion | 183 | 5.34 | 1.51 | 184 | 5.12 | 1.40 |
| | Wanted Inclusion | 183 | 4.27 | 2.36 | 184 | 3.88 | 2.04 |
| | Expressed Control | 183 | 5.13 | 1.74 | 184 | 5.84 | 1.74 |
| | Wanted Control | 183 | 5.17 | 1.81 | 184 | 5.05 | 1.83 |
| | Expressed Affection | 183 | 4.26 | 2.16 | 184 | 3.52 | 2.24 |
| | Wanted Affection | 183 | 5.12 | 2.03 | 184 | 4.60 | 2.06 |
| | Total Inclusion | 183 | 9.61 | 3.30 | 184 | 8.99 | 2.93 |
| | Total Control | 183 | 10.30 | 2.52 | 184 | 10.89 | 2.37 |
| | Total Affection | 183 | 9.38 | 3.72 | 184 | 8.11 | 3.81 |
| | Total Expressed | 183 | 14.72 | 3.53 | 184 | 14.47 | 3.67 |
| | Total Wanted | 183 | 14.56 | 4.68 | 184 | 13.53 | 4.18 |
| | Total Overall | 183 | 29.28 | 6.94 | 184 | 28.00 | 6.78 |
| English, North American | Expressed Inclusion | 200 | 4.19 | 2.35 | 199 | 3.61 | 2.31 |
| | Wanted Inclusion | 200 | 3.75 | 3.38 | 199 | 3.77 | 3.22 |
| | Expressed Control | 200 | 3.57 | 2.68 | 199 | 4.28 | 2.90 |
| | Wanted Control | 200 | 3.07 | 2.08 | 199 | 3.20 | 2.28 |
| | Expressed Affection | 200 | 4.77 | 2.48 | 199 | 3.91 | 2.54 |
| | Wanted Affection | 200 | 5.48 | 2.27 | 199 | 5.22 | 2.46 |
| | Total Inclusion | 200 | 7.94 | 4.98 | 199 | 7.38 | 4.82 |
| | Total Control | 200 | 6.64 | 3.08 | 199 | 7.48 | 3.37 |
| | Total Affection | 200 | 10.25 | 4.23 | 199 | 9.13 | 4.32 |
| | Total Expressed | 200 | 12.52 | 5.41 | 199 | 11.80 | 5.37 |
| | Total Wanted | 200 | 12.30 | 5.85 | 199 | 12.18 | 5.82 |
| | Total Overall | 200 | 24.82 | 9.67 | 199 | 23.98 | 9.40 |

(cont'd)

TABLE 13. MEAN SCALE SCORES BY GENDER: INTERNATIONAL NORM SAMPLE (CONT'D)

| Assessment Language | Scale | Female | | | Male | | |
|--------------------------|---------------------|----------|------------|-----------|----------|------------|-----------|
| | | <i>n</i> | Mean Score | <i>SD</i> | <i>n</i> | Mean Score | <i>SD</i> |
| French | Expressed Inclusion | 127 | 5.49 | 1.38 | 126 | 5.54 | 1.31 |
| | Wanted Inclusion | 127 | 4.65 | 2.38 | 126 | 4.60 | 2.00 |
| | Expressed Control | 127 | 5.35 | 2.05 | 126 | 6.13 | 1.55 |
| | Wanted Control | 127 | 4.39 | 2.00 | 126 | 4.67 | 1.61 |
| | Expressed Affection | 127 | 5.05 | 2.13 | 126 | 5.32 | 2.14 |
| | Wanted Affection | 127 | 5.30 | 1.94 | 126 | 5.69 | 2.11 |
| | Total Inclusion | 127 | 10.14 | 3.19 | 126 | 10.14 | 2.76 |
| | Total Control | 127 | 9.74 | 2.81 | 126 | 10.79 | 2.00 |
| | Total Affection | 127 | 10.35 | 3.60 | 126 | 11.01 | 3.78 |
| | Total Expressed | 127 | 15.88 | 3.69 | 126 | 16.98 | 3.41 |
| | Total Wanted | 127 | 14.35 | 4.24 | 126 | 14.96 | 4.05 |
| | Total Overall | 127 | 30.23 | 6.77 | 126 | 31.94 | 6.46 |
| German | Expressed Inclusion | 103 | 4.97 | 1.48 | 101 | 4.89 | 1.62 |
| | Wanted Inclusion | 103 | 4.10 | 2.46 | 101 | 3.71 | 2.16 |
| | Expressed Control | 103 | 4.76 | 1.99 | 101 | 5.35 | 2.06 |
| | Wanted Control | 103 | 4.60 | 1.83 | 101 | 4.81 | 1.83 |
| | Expressed Affection | 103 | 4.26 | 2.01 | 101 | 3.83 | 2.28 |
| | Wanted Affection | 103 | 5.37 | 2.21 | 101 | 4.97 | 2.42 |
| | Total Inclusion | 103 | 9.07 | 3.36 | 101 | 8.60 | 3.31 |
| | Total Control | 103 | 9.36 | 2.75 | 101 | 10.16 | 2.58 |
| | Total Affection | 103 | 9.63 | 3.72 | 101 | 8.80 | 4.07 |
| | Total Expressed | 103 | 13.99 | 3.68 | 101 | 14.07 | 4.30 |
| | Total Wanted | 103 | 14.07 | 4.83 | 101 | 13.50 | 4.93 |
| | Total Overall | 103 | 28.06 | 7.19 | 101 | 27.56 | 7.80 |
| Portuguese, Brazilian | Expressed Inclusion | 145 | 4.43 | 2.24 | 144 | 4.57 | 2.25 |
| | Wanted Inclusion | 145 | 4.08 | 3.22 | 144 | 4.64 | 3.23 |
| | Expressed Control | 145 | 3.85 | 2.78 | 144 | 4.42 | 2.74 |
| | Wanted Control | 145 | 2.79 | 2.10 | 144 | 2.56 | 1.96 |
| | Expressed Affection | 145 | 4.93 | 2.74 | 144 | 4.97 | 2.92 |
| | Wanted Affection | 145 | 6.21 | 2.27 | 144 | 6.35 | 2.46 |
| | Total Inclusion | 145 | 8.50 | 4.75 | 144 | 9.21 | 4.82 |
| | Total Control | 145 | 6.64 | 3.31 | 144 | 6.98 | 3.11 |
| | Total Affection | 145 | 11.14 | 4.40 | 144 | 11.33 | 4.72 |
| | Total Expressed | 145 | 13.21 | 5.53 | 144 | 13.97 | 5.89 |
| | Total Wanted | 145 | 13.08 | 5.51 | 144 | 13.55 | 5.55 |
| | Total Overall | 145 | 26.29 | 9.41 | 144 | 27.51 | 9.85 |

(cont'd)

TABLE 13. MEAN SCALE SCORES BY GENDER: INTERNATIONAL NORM SAMPLE (CONT'D)

| Assessment Language | Scale | Female | | | Male | | |
|-------------------------|---------------------|----------|------------|-----------|----------|------------|-----------|
| | | <i>n</i> | Mean Score | <i>SD</i> | <i>n</i> | Mean Score | <i>SD</i> |
| Spanish, European | Expressed Inclusion | 126 | 5.31 | 1.46 | 126 | 4.83 | 1.52 |
| | Wanted Inclusion | 126 | 4.34 | 2.29 | 126 | 4.42 | 2.43 |
| | Expressed Control | 126 | 4.65 | 1.89 | 126 | 5.33 | 1.72 |
| | Wanted Control | 126 | 5.04 | 1.50 | 126 | 4.95 | 1.81 |
| | Expressed Affection | 126 | 4.56 | 2.26 | 126 | 3.98 | 2.49 |
| | Wanted Affection | 126 | 5.72 | 2.08 | 126 | 5.69 | 2.22 |
| | Total Inclusion | 126 | 9.65 | 3.16 | 126 | 9.25 | 3.31 |
| | Total Control | 126 | 9.69 | 2.57 | 126 | 10.28 | 2.38 |
| | Total Affection | 126 | 10.28 | 3.62 | 126 | 9.67 | 4.10 |
| | Total Expressed | 126 | 14.52 | 4.07 | 126 | 14.13 | 3.88 |
| | Total Wanted | 126 | 15.10 | 4.34 | 126 | 15.06 | 4.58 |
| | Total Overall | 126 | 29.62 | 7.26 | 126 | 29.20 | 7.34 |
| Spanish, Latin American | Expressed Inclusion | 128 | 3.58 | 2.33 | 129 | 3.49 | 2.18 |
| | Wanted Inclusion | 128 | 3.63 | 3.50 | 129 | 3.23 | 3.25 |
| | Expressed Control | 128 | 3.65 | 2.97 | 129 | 3.80 | 2.80 |
| | Wanted Control | 128 | 2.50 | 2.14 | 129 | 2.22 | 1.58 |
| | Expressed Affection | 128 | 3.59 | 2.41 | 129 | 3.99 | 2.51 |
| | Wanted Affection | 128 | 5.36 | 2.10 | 129 | 5.08 | 2.27 |
| | Total Inclusion | 128 | 7.20 | 5.27 | 129 | 6.72 | 4.75 |
| | Total Control | 128 | 6.15 | 3.97 | 129 | 6.02 | 3.28 |
| | Total Affection | 128 | 8.95 | 3.98 | 129 | 9.07 | 4.25 |
| | Total Expressed | 128 | 10.81 | 5.95 | 129 | 11.28 | 5.37 |
| | Total Wanted | 128 | 11.48 | 5.90 | 129 | 10.53 | 5.46 |
| | Total Overall | 128 | 22.30 | 10.78 | 129 | 21.81 | 9.71 |
| Swedish | Expressed Inclusion | 123 | 4.92 | 1.35 | 123 | 4.51 | 1.56 |
| | Wanted Inclusion | 123 | 3.84 | 2.14 | 123 | 3.51 | 2.27 |
| | Expressed Control | 123 | 4.84 | 1.74 | 123 | 5.59 | 1.74 |
| | Wanted Control | 123 | 5.00 | 2.04 | 123 | 5.06 | 1.81 |
| | Expressed Affection | 123 | 5.15 | 2.08 | 123 | 4.74 | 2.37 |
| | Wanted Affection | 123 | 5.98 | 1.76 | 123 | 5.72 | 1.95 |
| | Total Inclusion | 123 | 8.76 | 2.84 | 123 | 8.02 | 3.19 |
| | Total Control | 123 | 9.84 | 2.58 | 123 | 10.64 | 2.38 |
| | Total Affection | 123 | 11.13 | 3.23 | 123 | 10.46 | 3.80 |
| | Total Expressed | 123 | 14.90 | 3.41 | 123 | 14.84 | 3.80 |
| | Total Wanted | 123 | 14.82 | 4.36 | 123 | 14.29 | 4.19 |
| | Total Overall | 123 | 29.72 | 6.39 | 123 | 29.13 | 6.69 |

TABLE 14. SCALE INTERCORRELATIONS IN THE COMMERCIAL SAMPLE

| Assessment Language | Scale | 1. | 2. | 3. | 4. | 5. | 6. | 7. | 8. | 9. | 10. | 11. | 12. |
|-----------------------------|------------------------|-----|-----|------|------|-----|-----|-----|-----|-----|-----|-----|-----|
| Chinese, Simplified | 1. Expressed Inclusion | — | | | | | | | | | | | |
| | 2. Wanted Inclusion | .48 | — | | | | | | | | | | |
| | 3. Expressed Control | .34 | .34 | — | | | | | | | | | |
| | 4. Wanted Control | .14 | .04 | -.02 | — | | | | | | | | |
| | 5. Expressed Affection | .59 | .55 | .31 | .09 | — | | | | | | | |
| | 6. Wanted Affection | .42 | .64 | .27 | .03 | .63 | — | | | | | | |
| | 7. Total Inclusion | .76 | .94 | .39 | .09 | .65 | .64 | — | | | | | |
| | 8. Total Control | .35 | .28 | .75 | .65 | .30 | .23 | .35 | — | | | | |
| | 9. Total Affection | .56 | .66 | .33 | .06 | .91 | .90 | .72 | .29 | — | | | |
| | 10. Total Expressed | .79 | .59 | .72 | .08 | .83 | .57 | .75 | .60 | .78 | — | | |
| | 11. Total Wanted | .51 | .87 | .30 | .40 | .62 | .81 | .85 | .50 | .79 | .61 | — | |
| | 12. Total Overall | .72 | .82 | .56 | .28 | .80 | .77 | .90 | .61 | .87 | .89 | .91 | — |
| Chinese, Traditional | 1. Expressed Inclusion | — | | | | | | | | | | | |
| | 2. Wanted Inclusion | .42 | — | | | | | | | | | | |
| | 3. Expressed Control | .40 | .35 | — | | | | | | | | | |
| | 4. Wanted Control | .20 | .21 | .22 | — | | | | | | | | |
| | 5. Expressed Affection | .46 | .47 | .35 | .11 | — | | | | | | | |
| | 6. Wanted Affection | .27 | .40 | .17 | -.04 | .33 | — | | | | | | |
| | 7. Total Inclusion | .69 | .94 | .42 | .24 | .54 | .41 | — | | | | | |
| | 8. Total Control | .40 | .37 | .85 | .71 | .31 | .10 | .44 | — | | | | |
| | 9. Total Affection | .44 | .53 | .31 | .04 | .80 | .83 | .58 | .25 | — | | | |
| | 10. Total Expressed | .74 | .53 | .78 | .23 | .80 | .33 | .69 | .68 | .68 | — | | |
| | 11. Total Wanted | .45 | .87 | .37 | .43 | .48 | .69 | .85 | .50 | .72 | .55 | — | |
| | 12. Total Overall | .66 | .81 | .64 | .38 | .72 | .59 | .88 | .67 | .80 | .87 | .90 | — |

TABLE 14. SCALE INTERCORRELATIONS IN THE COMMERCIAL SAMPLE (CONT'D)

| Assessment Language | Scale | 1. | 2. | 3. | 4. | 5. | 6. | 7. | 8. | 9. | 10. | 11. | 12. |
|---------------------|------------------------|------|-----|------|------|-----|-----|-----|-----|-----|-----|-----|-----|
| Danish | 1. Expressed Inclusion | — | | | | | | | | | | | |
| | 2. Wanted Inclusion | .36 | — | | | | | | | | | | |
| | 3. Expressed Control | -.01 | .05 | — | | | | | | | | | |
| | 4. Wanted Control | .11 | .25 | -.10 | — | | | | | | | | |
| | 5. Expressed Affection | .40 | .29 | .00 | .02 | — | | | | | | | |
| | 6. Wanted Affection | .26 | .32 | -.09 | .10 | .60 | — | | | | | | |
| | 7. Total Inclusion | .77 | .88 | .03 | .23 | .40 | .36 | — | | | | | |
| | 8. Total Control | .08 | .23 | .62 | .72 | .01 | .02 | .20 | — | | | | |
| | 9. Total Affection | .38 | .34 | -.05 | .07 | .91 | .88 | .43 | .02 | — | | | |
| | 10. Total Expressed | .65 | .36 | .40 | .02 | .85 | .48 | .58 | .30 | .76 | — | | |
| | 11. Total Wanted | .36 | .75 | -.07 | .59 | .47 | .74 | .70 | .42 | .66 | .44 | — | |
| | 12. Total Overall | .59 | .66 | .19 | .37 | .77 | .72 | .76 | .43 | .83 | .83 | .86 | — |
| Dutch | 1. Expressed Inclusion | — | | | | | | | | | | | |
| | 2. Wanted Inclusion | .45 | — | | | | | | | | | | |
| | 3. Expressed Control | .24 | .32 | — | | | | | | | | | |
| | 4. Wanted Control | .07 | .05 | -.06 | — | | | | | | | | |
| | 5. Expressed Affection | .37 | .40 | .18 | -.03 | — | | | | | | | |
| | 6. Wanted Affection | .23 | .46 | .14 | -.02 | .52 | — | | | | | | |
| | 7. Total Inclusion | .80 | .90 | .34 | .07 | .46 | .42 | — | | | | | |
| | 8. Total Control | .24 | .28 | .74 | .63 | .12 | .09 | .31 | — | | | | |
| | 9. Total Affection | .35 | .49 | .18 | -.03 | .89 | .85 | .50 | .12 | — | | | |
| | 10. Total Expressed | .69 | .54 | .61 | -.02 | .82 | .46 | .71 | .47 | .75 | — | | |
| | 11. Total Wanted | .39 | .79 | .22 | .40 | .49 | .79 | .73 | .44 | .72 | .53 | — | |
| | 12. Total Overall | .62 | .76 | .48 | .21 | .75 | .71 | .82 | .52 | .84 | .88 | .87 | — |

TABLE 14. SCALE INTERCORRELATIONS IN THE COMMERCIAL SAMPLE (CONT'D)

| Assessment Language | Scale | 1. | 2. | 3. | 4. | 5. | 6. | 7. | 8. | 9. | 10. | 11. | 12. |
|--------------------------------|------------------------|-----|-----|------|-----|-----|-----|-----|-----|-----|-----|-----|-----|
| English, European | 1. Expressed Inclusion | — | | | | | | | | | | | |
| | 2. Wanted Inclusion | .45 | — | | | | | | | | | | |
| | 3. Expressed Control | .10 | .17 | — | | | | | | | | | |
| | 4. Wanted Control | .11 | .11 | .01 | — | | | | | | | | |
| | 5. Expressed Affection | .39 | .38 | .07 | .08 | — | | | | | | | |
| | 6. Wanted Affection | .26 | .49 | .03 | .06 | .60 | — | | | | | | |
| | 7. Total Inclusion | .79 | .90 | .17 | .13 | .45 | .46 | — | | | | | |
| | 8. Total Control | .15 | .20 | .71 | .71 | .10 | .07 | .21 | — | | | | |
| | 9. Total Affection | .37 | .48 | .06 | .08 | .91 | .88 | .51 | .10 | — | | | |
| | 10. Total Expressed | .68 | .49 | .50 | .10 | .83 | .50 | .66 | .42 | .75 | — | | |
| | 11. Total Wanted | .41 | .80 | .11 | .47 | .54 | .80 | .74 | .40 | .74 | .55 | — | |
| | 12. Total Overall | .61 | .74 | .34 | .33 | .77 | .75 | .80 | .47 | .85 | .87 | .89 | — |
| English, North American | 1. Expressed Inclusion | | | | | | | | | | | | |
| | 2. Wanted Inclusion | .55 | — | | | | | | | | | | |
| | 3. Expressed Control | .23 | .22 | — | | | | | | | | | |
| | 4. Wanted Control | .17 | .15 | -.01 | — | | | | | | | | |
| | 5. Expressed Affection | .55 | .46 | .14 | .08 | — | | | | | | | |
| | 6. Wanted Affection | .39 | .55 | .09 | .07 | .59 | — | | | | | | |
| | 7. Total Inclusion | .82 | .93 | .25 | .17 | .56 | .55 | — | | | | | |
| | 8. Total Control | .28 | .26 | .78 | .62 | .16 | .11 | .30 | — | | | | |
| | 9. Total Affection | .52 | .57 | .13 | .09 | .89 | .89 | .62 | .15 | — | | | |
| | 10. Total Expressed | .78 | .55 | .66 | .10 | .75 | .47 | .72 | .58 | .69 | — | | |
| | 11. Total Wanted | .54 | .87 | .16 | .48 | .54 | .77 | .83 | .43 | .73 | .55 | — | |
| | 12. Total Overall | .75 | .81 | .45 | .34 | .73 | .71 | .88 | .57 | .81 | .87 | .89 | — |

TABLE 14. SCALE INTERCORRELATIONS IN THE COMMERCIAL SAMPLE (CONT'D)

| Assessment Language | Scale | 1. | 2. | 3. | 4. | 5. | 6. | 7. | 8. | 9. | 10. | 11. | 12. |
|---------------------|------------------------|-----|-----|------|-----|-----|-----|-----|-----|-----|-----|-----|-----|
| French | 1. Expressed Inclusion | — | | | | | | | | | | | |
| | 2. Wanted Inclusion | .41 | — | | | | | | | | | | |
| | 3. Expressed Control | .16 | .15 | — | | | | | | | | | |
| | 4. Wanted Control | .14 | .13 | -.04 | — | | | | | | | | |
| | 5. Expressed Affection | .40 | .45 | .03 | .14 | — | | | | | | | |
| | 6. Wanted Affection | .24 | .51 | .00 | .10 | .61 | — | | | | | | |
| | 7. Total Inclusion | .76 | .91 | .18 | .16 | .51 | .48 | — | | | | | |
| | 8. Total Control | .22 | .20 | .69 | .70 | .12 | .07 | .25 | — | | | | |
| | 9. Total Affection | .36 | .53 | .01 | .14 | .91 | .88 | .55 | .11 | — | | | |
| | 10. Total Expressed | .68 | .51 | .51 | .13 | .81 | .48 | .68 | .46 | .74 | — | | |
| | 11. Total Wanted | .38 | .80 | .06 | .51 | .58 | .80 | .74 | .41 | .77 | .54 | — | |
| | 12. Total Overall | .60 | .75 | .31 | .38 | .79 | .74 | .81 | .49 | .86 | .86 | .89 | — |
| German | 1. Expressed Inclusion | — | | | | | | | | | | | |
| | 2. Wanted Inclusion | .40 | — | | | | | | | | | | |
| | 3. Expressed Control | .13 | .13 | — | | | | | | | | | |
| | 4. Wanted Control | .10 | .02 | -.11 | — | | | | | | | | |
| | 5. Expressed Affection | .41 | .43 | .15 | .09 | — | | | | | | | |
| | 6. Wanted Affection | .34 | .53 | .08 | .04 | .59 | — | | | | | | |
| | 7. Total Inclusion | .79 | .88 | .16 | .06 | .50 | .53 | — | | | | | |
| | 8. Total Control | .18 | .12 | .75 | .58 | .18 | .09 | .17 | — | | | | |
| | 9. Total Affection | .42 | .53 | .13 | .07 | .90 | .88 | .58 | .16 | — | | | |
| | 10. Total Expressed | .69 | .47 | .56 | .05 | .82 | .53 | .67 | .49 | .76 | — | | |
| | 11. Total Wanted | .43 | .81 | .08 | .37 | .58 | .84 | .77 | .31 | .78 | .55 | — | |
| | 12. Total Overall | .64 | .73 | .36 | .24 | .80 | .77 | .82 | .45 | .88 | .88 | .88 | — |

TABLE 14. SCALE INTERCORRELATIONS IN THE COMMERCIAL SAMPLE (CONT'D)

| Assessment Language | Scale | 1. | 2. | 3. | 4. | 5. | 6. | 7. | 8. | 9. | 10. | 11. | 12. |
|--------------------------------|------------------------|-----|-----|------|-----|-----|-----|-----|-----|-----|-----|-----|-----|
| Russian | 1. Expressed Inclusion | — | | | | | | | | | | | |
| | 2. Wanted Inclusion | .52 | — | | | | | | | | | | |
| | 3. Expressed Control | .24 | .29 | — | | | | | | | | | |
| | 4. Wanted Control | .20 | .17 | -.05 | — | | | | | | | | |
| | 5. Expressed Affection | .46 | .34 | .18 | .09 | — | | | | | | | |
| | 6. Wanted Affection | .29 | .45 | .11 | .06 | .52 | — | | | | | | |
| | 7. Total Inclusion | .80 | .93 | .31 | .21 | .43 | .44 | — | | | | | |
| | 8. Total Control | .32 | .34 | .74 | .64 | .20 | .13 | .38 | — | | | | |
| | 9. Total Affection | .42 | .45 | .17 | .08 | .87 | .88 | .50 | .19 | — | | | |
| | 10. Total Expressed | .73 | .51 | .68 | .10 | .76 | .42 | .68 | .59 | .68 | — | | |
| | 11. Total Wanted | .51 | .84 | .20 | .51 | .46 | .72 | .81 | .50 | .68 | .52 | — | |
| | 12. Total Overall | .70 | .79 | .48 | .36 | .69 | .67 | .86 | .62 | .78 | .85 | .89 | — |
| Spanish, Customized | 1. Expressed Inclusion | — | | | | | | | | | | | |
| | 2. Wanted Inclusion | .47 | — | | | | | | | | | | |
| | 3. Expressed Control | .07 | .22 | — | | | | | | | | | |
| | 4. Wanted Control | .15 | .11 | .04 | — | | | | | | | | |
| | 5. Expressed Affection | .51 | .44 | .04 | .05 | — | | | | | | | |
| | 6. Wanted Affection | .30 | .51 | .09 | .11 | .51 | — | | | | | | |
| | 7. Total Inclusion | .80 | .91 | .19 | .15 | .54 | .49 | — | | | | | |
| | 8. Total Control | .16 | .23 | .69 | .75 | .06 | .14 | .23 | — | | | | |
| | 9. Total Affection | .47 | .54 | .07 | .09 | .90 | .84 | .60 | .11 | — | | | |
| | 10. Total Expressed | .72 | .55 | .46 | .11 | .85 | .48 | .72 | .38 | .78 | — | | |
| | 11. Total Wanted | .44 | .79 | .17 | .53 | .49 | .79 | .75 | .50 | .72 | .55 | — | |
| | 12. Total Overall | .66 | .76 | .35 | .37 | .75 | .73 | .83 | .50 | .85 | .87 | .89 | — |

TABLE 14. SCALE INTERCORRELATIONS IN THE COMMERCIAL SAMPLE (CONT'D)

| Assessment Language | Score | 1. | 2. | 3. | 4. | 5. | 6. | 7. | 8. | 9. | 10. | 11. | 12. |
|--------------------------------|------------------------|-----|------|------|------|-----|-----|-----|-----|-----|-----|-----|-----|
| | 1. Expressed Inclusion | — | | | | | | | | | | | |
| | 2. Wanted Inclusion | .41 | — | | | | | | | | | | |
| | 3. Expressed Control | .13 | .12 | — | | | | | | | | | |
| | 4. Wanted Control | .07 | -.03 | .01 | — | | | | | | | | |
| | 5. Expressed Affection | .45 | .45 | .10 | .10 | — | | | | | | | |
| | 6. Wanted Affection | .38 | .59 | .08 | .05 | .67 | — | | | | | | |
| | 7. Total Inclusion | .80 | .87 | .15 | .02 | .54 | .59 | — | | | | | |
| | 8. Total Control | .14 | .07 | .70 | .72 | .14 | .09 | .12 | — | | | | |
| | 9. Total Affection | .46 | .56 | .10 | .08 | .93 | .90 | .61 | .13 | — | | | |
| | 10. Total Expressed | .70 | .49 | .50 | .09 | .85 | .60 | .70 | .41 | .81 | — | | |
| | 11. Total Wanted | .43 | .77 | .10 | .43 | .62 | .84 | .73 | .38 | .79 | .60 | — | |
| | 12. Total Overall | .64 | .70 | .34 | .29 | .83 | .81 | .80 | .44 | .89 | .90 | .89 | — |
| Spanish, European | | | | | | | | | | | | | |
| | 1. Expressed Inclusion | — | | | | | | | | | | | |
| | 2. Wanted Inclusion | .54 | — | | | | | | | | | | |
| | 3. Expressed Control | .22 | .18 | — | | | | | | | | | |
| | 4. Wanted Control | .10 | .00 | -.08 | — | | | | | | | | |
| | 5. Expressed Affection | .54 | .39 | .11 | -.01 | — | | | | | | | |
| | 6. Wanted Affection | .39 | .51 | .07 | .07 | .45 | — | | | | | | |
| | 7. Total Inclusion | .82 | .92 | .23 | .05 | .51 | .52 | — | | | | | |
| | 8. Total Control | .25 | .15 | .77 | .57 | .09 | .10 | .22 | — | | | | |
| | 9. Total Affection | .55 | .52 | .11 | .03 | .87 | .83 | .61 | .11 | — | | | |
| | 10. Total Expressed | .78 | .50 | .65 | .00 | .74 | .41 | .70 | .53 | .69 | — | | |
| | 11. Total Wanted | .54 | .84 | .11 | .42 | .43 | .76 | .81 | .36 | .68 | .48 | — | |
| | 12. Total Overall | .77 | .78 | .44 | .25 | .68 | .68 | .88 | .52 | .80 | .86 | .86 | — |
| Spanish, Latin American | | | | | | | | | | | | | |
| | 1. Expressed Inclusion | — | | | | | | | | | | | |
| | 2. Wanted Inclusion | .54 | — | | | | | | | | | | |
| | 3. Expressed Control | .22 | .18 | — | | | | | | | | | |
| | 4. Wanted Control | .10 | .00 | -.08 | — | | | | | | | | |
| | 5. Expressed Affection | .54 | .39 | .11 | -.01 | — | | | | | | | |
| | 6. Wanted Affection | .39 | .51 | .07 | .07 | .45 | — | | | | | | |
| | 7. Total Inclusion | .82 | .92 | .23 | .05 | .51 | .52 | — | | | | | |
| | 8. Total Control | .25 | .15 | .77 | .57 | .09 | .10 | .22 | — | | | | |
| | 9. Total Affection | .55 | .52 | .11 | .03 | .87 | .83 | .61 | .11 | — | | | |
| | 10. Total Expressed | .78 | .50 | .65 | .00 | .74 | .41 | .70 | .53 | .69 | — | | |
| | 11. Total Wanted | .54 | .84 | .11 | .42 | .43 | .76 | .81 | .36 | .68 | .48 | — | |
| | 12. Total Overall | .77 | .78 | .44 | .25 | .68 | .68 | .88 | .52 | .80 | .86 | .86 | — |

TABLE 14. SCALE INTERCORRELATIONS IN THE COMMERCIAL SAMPLE (CONT'D)

| Assessment Language | Scale | 1. | 2. | 3. | 4. | 5. | 6. | 7. | 8. | 9. | 10. | 11. | 12. |
|---------------------|------------------------|-----|-----|-----|-----|-----|-----|-----|-----|-----|-----|-----|-----|
| | 1. Expressed Inclusion | — | | | | | | | | | | | |
| | 2. Wanted Inclusion | .50 | — | | | | | | | | | | |
| | 3. Expressed Control | .21 | .35 | — | | | | | | | | | |
| | 4. Wanted Control | .26 | .42 | .34 | — | | | | | | | | |
| | 5. Expressed Affection | .57 | .51 | .14 | .31 | — | | | | | | | |
| | 6. Wanted Affection | .48 | .49 | .04 | .09 | .63 | — | | | | | | |
| | 7. Total Inclusion | .85 | .88 | .33 | .40 | .62 | .56 | — | | | | | |
| | 8. Total Control | .28 | .47 | .83 | .80 | .27 | .08 | .44 | — | | | | |
| | 9. Total Affection | .59 | .56 | .11 | .24 | .93 | .87 | .66 | .21 | — | | | |
| | 10. Total Expressed | .79 | .62 | .58 | .41 | .82 | .54 | .81 | .61 | .78 | — | | |
| | 11. Total Wanted | .55 | .87 | .33 | .67 | .65 | .70 | .83 | .61 | .74 | .71 | — | |
| | 12. Total Overall | .73 | .80 | .50 | .58 | .80 | .67 | .89 | .66 | .82 | .93 | .92 | — |
| Swedish | | | | | | | | | | | | | |

TABLE 15. SCALE INTERCORRELATIONS IN THE INTERNATIONAL NORM SAMPLE

| Assessment Language | Scale | 1. | 2. | 3. | 4. | 5. | 6. | 7. | 8. | 9. | 10. | 11. | 12. |
|---------------------|------------------------|-----|-----|------|------|------|------|-----|------|-----|-----|-----|-----|
| Danish | 1. Expressed Inclusion | — | | | | | | | | | | | |
| | 2. Wanted Inclusion | .32 | — | | | | | | | | | | |
| | 3. Expressed Control | .07 | .00 | — | | | | | | | | | |
| | 4. Wanted Control | .03 | .24 | -.11 | — | | | | | | | | |
| | 5. Expressed Affection | .45 | .30 | .00 | -.12 | — | | | | | | | |
| | 6. Wanted Affection | .30 | .45 | -.07 | .05 | .55 | — | | | | | | |
| | 7. Total Inclusion | .72 | .89 | .03 | .19 | .44 | .48 | — | | | | | |
| | 8. Total Control | .08 | .17 | .70 | .64 | -.09 | -.02 | .16 | — | | | | |
| | 9. Total Affection | .43 | .42 | -.03 | -.05 | .91 | .85 | .52 | -.06 | — | | | |
| | 10. Total Expressed | .68 | .31 | .46 | -.12 | .83 | .45 | .56 | .27 | .75 | — | | |
| | 11. Total Wanted | .32 | .82 | -.08 | .53 | .38 | .76 | .76 | .33 | .62 | .34 | — | |
| | 12. Total Overall | .61 | .70 | .23 | .26 | .74 | .74 | .74 | .81 | .37 | .84 | .81 | — |
| Dutch | 1. Expressed Inclusion | — | | | | | | | | | | | |
| | 2. Wanted Inclusion | .51 | — | | | | | | | | | | |
| | 3. Expressed Control | .15 | .24 | — | | | | | | | | | |
| | 4. Wanted Control | .23 | .04 | -.03 | — | | | | | | | | |
| | 5. Expressed Affection | .38 | .29 | .13 | .00 | — | | | | | | | |
| | 6. Wanted Affection | .22 | .40 | .06 | .03 | .49 | — | | | | | | |
| | 7. Total Inclusion | .81 | .92 | .23 | .13 | .37 | .37 | — | | | | | |
| | 8. Total Control | .27 | .20 | .70 | .69 | .09 | .07 | .26 | — | | | | |
| | 9. Total Affection | .35 | .39 | .11 | .02 | .89 | .84 | .43 | .09 | — | | | |
| | 10. Total Expressed | .67 | .48 | .60 | .07 | .79 | .40 | .64 | .49 | .71 | — | | |
| | 11. Total Wanted | .50 | .77 | .15 | .49 | .40 | .72 | .75 | .46 | .63 | .49 | — | |
| | 12. Total Overall | .68 | .72 | .43 | .33 | .69 | .65 | .80 | .55 | .78 | .86 | .87 | — |

TABLE 15. SCALE INTERCORRELATIONS IN THE INTERNATIONAL NORM SAMPLE (CONT'D)

| Assessment Language | Scale | 1. | 2. | 3. | 4. | 5. | 6. | 7. | 8. | 9. | 10. | 11. | 12. |
|--------------------------------|------------------------|-----|-----|------|------|-----|-----|-----|-----|-----|-----|-----|-----|
| English, European | 1. Expressed Inclusion | — | | | | | | | | | | | |
| | 2. Wanted Inclusion | .43 | — | | | | | | | | | | |
| | 3. Expressed Control | .05 | .11 | — | | | | | | | | | |
| | 4. Wanted Control | .03 | .11 | -.06 | — | | | | | | | | |
| | 5. Expressed Affection | .40 | .42 | -.02 | .06 | — | | | | | | | |
| | 6. Wanted Affection | .25 | .59 | -.05 | .16 | .57 | — | | | | | | |
| | 7. Total Inclusion | .77 | .91 | .10 | .09 | .48 | .54 | — | | | | | |
| | 8. Total Control | .06 | .16 | .68 | .70 | .04 | .08 | .14 | — | | | | |
| | 9. Total Affection | .37 | .57 | -.04 | .12 | .90 | .88 | .57 | .06 | — | | | |
| | 10. Total Expressed | .68 | .49 | .50 | .02 | .77 | .43 | .66 | .38 | .69 | — | | |
| | 11. Total Wanted | .34 | .81 | .01 | .53 | .50 | .82 | .73 | .40 | .74 | .45 | — | |
| | 12. Total Overall | .57 | .78 | .27 | .36 | .73 | .76 | .82 | .46 | .84 | .82 | .88 | — |
| English, North American | 1. Expressed Inclusion | — | | | | | | | | | | | |
| | 2. Wanted Inclusion | .50 | — | | | | | | | | | | |
| | 3. Expressed Control | .13 | .19 | — | | | | | | | | | |
| | 4. Wanted Control | .09 | .17 | -.17 | — | | | | | | | | |
| | 5. Expressed Affection | .56 | .44 | .06 | -.03 | — | | | | | | | |
| | 6. Wanted Affection | .37 | .58 | .00 | .12 | .54 | — | | | | | | |
| | 7. Total Inclusion | .81 | .91 | .19 | .16 | .57 | .57 | — | | | | | |
| | 8. Total Control | .17 | .28 | .75 | .52 | .03 | .09 | .27 | — | | | | |
| | 9. Total Affection | .54 | .58 | .04 | .05 | .89 | .87 | .65 | .07 | — | | | |
| | 10. Total Expressed | .77 | .52 | .60 | -.06 | .75 | .42 | .72 | .48 | .67 | — | | |
| | 11. Total Wanted | .47 | .86 | .04 | .52 | .46 | .78 | .80 | .39 | .70 | .44 | — | |
| | 12. Total Overall | .72 | .82 | .37 | .28 | .70 | .71 | .90 | .51 | .81 | .84 | .86 | — |

TABLE 15. SCALE INTERCORRELATIONS IN THE INTERNATIONAL NORM SAMPLE (CONT'D)

| Assessment Language | Scale | 1. | 2. | 3. | 4. | 5. | 6. | 7. | 8. | 9. | 10. | 11. | 12. |
|---------------------|------------------------|-----|-----|------|-----|-----|-----|-----|-----|-----|-----|-----|-----|
| French | 1. Expressed Inclusion | — | | | | | | | | | | | |
| | 2. Wanted Inclusion | .38 | — | | | | | | | | | | |
| | 3. Expressed Control | .12 | .14 | — | | | | | | | | | |
| | 4. Wanted Control | .02 | .04 | -.08 | — | | | | | | | | |
| | 5. Expressed Affection | .34 | .42 | .07 | .16 | — | | | | | | | |
| | 6. Wanted Affection | .10 | .49 | .08 | .04 | .58 | — | | | | | | |
| | 7. Total Inclusion | .73 | .91 | .16 | .04 | .46 | .41 | — | | | | | |
| | 8. Total Control | .11 | .13 | .69 | .67 | .16 | .09 | .14 | — | | | | |
| | 9. Total Affection | .25 | .51 | .08 | .11 | .89 | .88 | .49 | .14 | — | | | |
| | 10. Total Expressed | .64 | .46 | .60 | .06 | .76 | .42 | .63 | .49 | .67 | — | | |
| | 11. Total Wanted | .26 | .79 | .08 | .48 | .57 | .77 | .70 | .41 | .75 | .48 | — | |
| | 12. Total Overall | .51 | .74 | .37 | .33 | .76 | .71 | .77 | .52 | .83 | .84 | .88 | — |
| German | 1. Expressed Inclusion | — | | | | | | | | | | | |
| | 2. Wanted Inclusion | .47 | — | | | | | | | | | | |
| | 3. Expressed Control | .12 | .08 | — | | | | | | | | | |
| | 4. Wanted Control | .12 | .23 | -.03 | — | | | | | | | | |
| | 5. Expressed Affection | .47 | .47 | .09 | .05 | — | | | | | | | |
| | 6. Wanted Affection | .28 | .56 | -.07 | .21 | .53 | — | | | | | | |
| | 7. Total Inclusion | .79 | .91 | .11 | .22 | .54 | .52 | — | | | | | |
| | 8. Total Control | .17 | .22 | .74 | .65 | .11 | .09 | .23 | — | | | | |
| | 9. Total Affection | .42 | .59 | .01 | .15 | .87 | .88 | .60 | .11 | — | | | |
| | 10. Total Expressed | .70 | .48 | .61 | .06 | .77 | .36 | .66 | .50 | .64 | — | | |
| | 11. Total Wanted | .40 | .83 | -.01 | .58 | .49 | .82 | .76 | .39 | .76 | .42 | — | |
| | 12. Total Overall | .64 | .79 | .32 | .41 | .73 | .73 | .85 | .52 | .83 | .81 | .88 | — |

TABLE 15. SCALE INTERCORRELATIONS IN THE INTERNATIONAL NORM SAMPLE (CONT'D)

| Assessment Language | Scale | 1. | 2. | 3. | 4. | 5. | 6. | 7. | 8. | 9. | 10. | 11. | 12. |
|----------------------------------|------------------------|------|-----|------|------|-----|-----|-----|-----|-----|-----|-----|-----|
| Portuguese, Brazilian | 1. Expressed Inclusion | — | | | | | | | | | | | |
| | 2. Wanted Inclusion | .52 | — | | | | | | | | | | |
| | 3. Expressed Control | .17 | .25 | — | | | | | | | | | |
| | 4. Wanted Control | -.05 | .05 | -.13 | — | | | | | | | | |
| | 5. Expressed Affection | .63 | .49 | .12 | -.08 | — | | | | | | | |
| | 6. Wanted Affection | .36 | .60 | .05 | .05 | .54 | — | | | | | | |
| | 7. Total Inclusion | .82 | .92 | .24 | .01 | .63 | .58 | — | | | | | |
| | 8. Total Control | .11 | .25 | .78 | .52 | .05 | .08 | .22 | — | | | | |
| | 9. Total Affection | .58 | .62 | .10 | -.03 | .90 | .85 | .69 | .07 | — | | | |
| | 10. Total Expressed | .79 | .56 | .61 | -.13 | .80 | .43 | .75 | .45 | .72 | — | | |
| | 11. Total Wanted | .44 | .86 | .12 | .42 | .49 | .80 | .79 | .37 | .72 | .47 | — | |
| | 12. Total Overall | .72 | .83 | .43 | .17 | .75 | .71 | .90 | .48 | .84 | .86 | .85 | — |
| Spanish, European | 1. Expressed Inclusion | — | | | | | | | | | | | |
| | 2. Wanted Inclusion | .37 | — | | | | | | | | | | |
| | 3. Expressed Control | .10 | .24 | — | | | | | | | | | |
| | 4. Wanted Control | .05 | .02 | .01 | — | | | | | | | | |
| | 5. Expressed Affection | .43 | .43 | .10 | .01 | — | | | | | | | |
| | 6. Wanted Affection | .28 | .67 | .14 | -.01 | .46 | — | | | | | | |
| | 7. Total Inclusion | .74 | .90 | .22 | .04 | .51 | .62 | — | | | | | |
| | 8. Total Control | .10 | .19 | .74 | .67 | .08 | .10 | .19 | — | | | | |
| | 9. Total Affection | .42 | .64 | .13 | .00 | .87 | .84 | .66 | .10 | — | | | |
| | 10. Total Expressed | .68 | .51 | .56 | .03 | .81 | .44 | .69 | .43 | .74 | — | | |
| | 11. Total Wanted | .35 | .86 | .20 | .38 | .45 | .84 | .79 | .40 | .74 | .49 | — | |
| | 12. Total Overall | .58 | .80 | .42 | .25 | .72 | .75 | .86 | .48 | .86 | .85 | .88 | — |

TABLE 15. SCALE INTERCORRELATIONS IN THE INTERNATIONAL NORM SAMPLE (CONT'D)

| Assessment Language | Scale | 1. | 2. | 3. | 4. | 5. | 6. | 7. | 8. | 9. | 10. | 11. | 12. |
|----------------------------|------------------------|-----|-----|------|-----|-----|------|-----|-----|-----|-----|-----|-----|
| Spanish, Latin American | 1. Expressed Inclusion | — | | | | | | | | | | | |
| | 2. Wanted Inclusion | .57 | — | | | | | | | | | | |
| | 3. Expressed Control | .26 | .28 | — | | | | | | | | | |
| | 4. Wanted Control | .30 | .17 | .13 | — | | | | | | | | |
| | 5. Expressed Affection | .63 | .52 | .17 | .09 | — | | | | | | | |
| | 6. Wanted Affection | .46 | .65 | .19 | .10 | .56 | — | | | | | | |
| | 7. Total Inclusion | .83 | .93 | .30 | .25 | .64 | .65 | — | | | | | |
| | 8. Total Control | .36 | .31 | .86 | .62 | .18 | .20 | .37 | — | | | | |
| | 9. Total Affection | .62 | .66 | .20 | .11 | .90 | .87 | .73 | .22 | — | | | |
| | 10. Total Expressed | .80 | .60 | .68 | .22 | .77 | .52 | .76 | .66 | .74 | — | | |
| | 11. Total Wanted | .61 | .90 | .28 | .47 | .55 | .81 | .88 | .47 | .76 | .63 | — | |
| | 12. Total Overall | .78 | .83 | .53 | .39 | .73 | .74 | .91 | .62 | .83 | .90 | .90 | — |
| Swedish | 1. Expressed Inclusion | — | | | | | | | | | | | |
| | 2. Wanted Inclusion | .34 | — | | | | | | | | | | |
| | 3. Expressed Control | .07 | .02 | — | | | | | | | | | |
| | 4. Wanted Control | .20 | .17 | -.08 | — | | | | | | | | |
| | 5. Expressed Affection | .38 | .29 | -.01 | .07 | — | | | | | | | |
| | 6. Wanted Affection | .24 | .58 | -.04 | .00 | .49 | — | | | | | | |
| | 7. Total Inclusion | .73 | .89 | .05 | .22 | .39 | .54 | — | | | | | |
| | 8. Total Control | .20 | .15 | .65 | .71 | .04 | -.02 | .21 | — | | | | |
| | 9. Total Affection | .36 | .49 | -.03 | .05 | .89 | .84 | .53 | .01 | — | | | |
| | 10. Total Expressed | .67 | .33 | .51 | .08 | .77 | .38 | .56 | .43 | .68 | — | | |
| | 11. Total Wanted | .37 | .85 | -.04 | .54 | .40 | .73 | .79 | .39 | .64 | .37 | — | |
| | 12. Total Overall | .61 | .73 | .25 | .40 | .68 | .69 | .83 | .49 | .79 | .80 | .86 | — |

RELIABILITY

Reliability was assessed by examining the internal consistency of responses to items within each scale. To the extent that items within a scale are highly correlated, further evidence is provided that these items are all measuring the specific construct of focus. Cronbach’s alpha reliabilities were calculated for each of the scales. Reliabilities for the commercial sample are presented in Table 16. Similarly, Table 17 shows Cronbach’s alpha reliabilities for the INS.

A general benchmark for determining acceptable internal consistency reliability is approximately .80. Tables 16 and 17 show that scales in both samples consistently reach and exceed this benchmark.

SUMMARY

The body of evidence displayed above by and large shows construct equivalence across the languages in which the FIRO-B has been translated. Nonetheless, there are some anomalies within the data that may warrant further evaluation, including two results of note. The commercial Danish subsample showed significant drop-offs in the scales of Expressed Affection and Wanted Affection. These results were not consistent with those observed in the INS. It is possible that the particular demographic composition of the Danish sample is responsible for the observed results; however, this is an open, empirical question. Another anomaly is that North American translations tended to have lower average scores relative to their international counterparts. Although similar patterns in term of the trends of scores were similar, there appeared to be a legitimate mean score difference across scales.

TABLE 16. ALPHA RELIABILITIES WITHIN THE COMMERCIAL SAMPLE

| Assessment Language | Expressed Inclusion | Wanted Inclusion | Expressed Control | Wanted Control | Expressed Affection | Wanted Affection |
|-------------------------|---------------------|------------------|-------------------|----------------|---------------------|------------------|
| Chinese, Simplified | .84 | .96 | .91 | .81 | .87 | .87 |
| Chinese, Traditional | .81 | .97 | .90 | .73 | .88 | .89 |
| Danish | .84 | .94 | .91 | .86 | .83 | .73 |
| Dutch | .85 | .94 | .89 | .85 | .81 | .84 |
| English, European | .80 | .91 | .87 | .81 | .85 | .84 |
| English, North American | .89 | .96 | .92 | .85 | .88 | .86 |
| French | .82 | .94 | .90 | .85 | .87 | .85 |
| German | .79 | .93 | .89 | .81 | .84 | .87 |
| Russian | .82 | .94 | .85 | .80 | .82 | .82 |
| Spanish, Customized | .87 | .96 | .92 | .85 | .87 | .85 |
| Spanish, European | .80 | .90 | .76 | .78 | .86 | .84 |
| Spanish, Latin American | .87 | .95 | .93 | .78 | .88 | .82 |
| Swedish | .88 | .95 | .91 | .87 | .86 | .80 |
| Mean | .83 | .94 | .89 | .82 | .86 | .84 |

TABLE 17. ALPHA RELIABILITIES WITHIN THE INTERNATIONAL NORM SAMPLE

| Assessment Language | Expressed Inclusion | Wanted Inclusion | Expressed Control | Wanted Control | Expressed Affection | Wanted Affection |
|-------------------------|---------------------|------------------|-------------------|----------------|---------------------|------------------|
| Danish | .82 | .93 | .94 | .90 | .89 | .78 |
| Dutch | .85 | .93 | .93 | .93 | .78 | .84 |
| English, European | .84 | .94 | .93 | .89 | .87 | .86 |
| English, North American | .90 | .96 | .93 | .88 | .89 | .87 |
| French | .75 | .93 | .90 | .89 | .81 | .83 |
| German | .81 | .95 | .94 | .92 | .85 | .89 |
| Portuguese, Brazilian | .81 | .93 | .92 | .86 | .88 | .86 |
| Spanish, European | .84 | .96 | .93 | .84 | .86 | .87 |
| Spanish, Latin American | .87 | .96 | .94 | .84 | .85 | .84 |
| Swedish | .81 | .95 | .91 | .92 | .85 | .83 |
| Mean | .83 | .94 | .93 | .89 | .85 | .84 |

REFERENCES

- CPP, Inc. *Data guide for the FIRO-B inventory*. (2012). Sunnyvale, CA: CPP, Inc.
- Hammer, A. L., & Schnell, E. R. (2000). *FIRO-B technical guide*. Sunnyvale, CA: CPP, Inc.
- Herk, N. A., Thompson, R. C., Morris, M. L., & Schaubhut, N. A. (2009). *FIRO Business technical guide*. Sunnyvale, CA: CPP, Inc.
- International Test Commission. (2000). *International guidelines for test use*. Louvain-la-Neuve, Belgium: International Test Commission.
- OPP Ltd. (2010). *The FIRO-B instrument: European data supplement*. Oxford, U.K.: OPP Ltd.
- Schutz, W. C. (1958). *FIRO: A three dimensional theory of interpersonal behavior*. New York: Holt, Rinehart, and Winston.
- Waterman, J. A., & Rogers, J. (1996). *Introduction to the FIRO-B instrument*. Sunnyvale, CA: CPP, Inc.